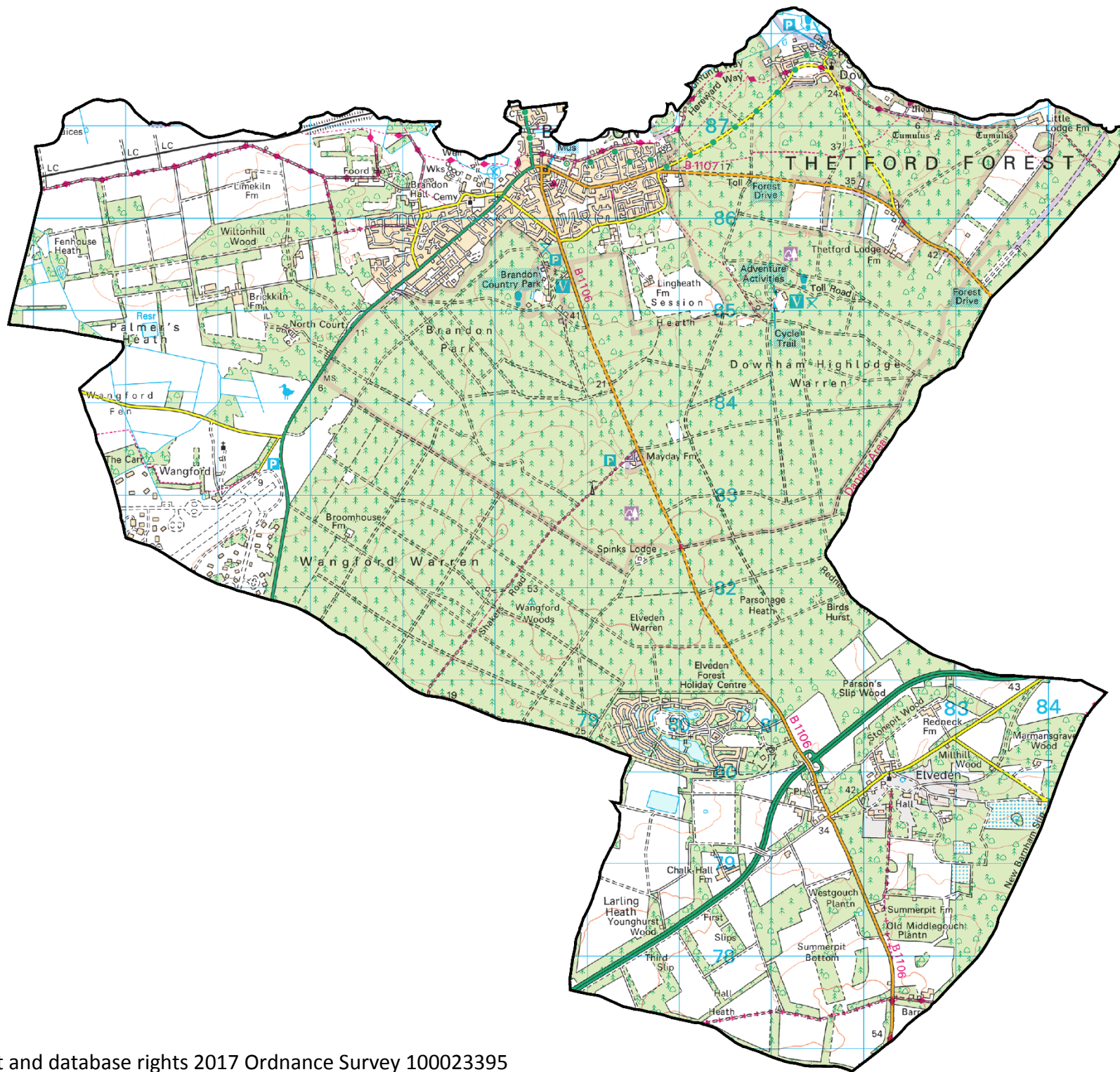


BRANDON

ELECTORAL DIVISION PROFILE 2017

This Division comprises Brandon East and Brandon West wards

www.suffolkobservatory.info



CONTENTS

- Demographic Profile: Age & Ethnicity
- Economy and Labour Market
- Schools & NEET
- Index of Multiple Deprivation
- Health
- Crime & Community Safety
- Additional Information
- Data Sources

ELECTORAL DIVISION PROFILES: AN INTRODUCTION

These profiles have been produced to support elected members, constituents and other interested parties in understanding the demographic, economic, social and educational profile of their neighbourhoods. We have used the latest data available at the time of publication.

Much more data is available from national and local sources than is captured here, but it is hoped that the profile will be a useful starting point for discussion, where local knowledge and experience can be used to flesh out and illuminate the information presented here.

The profile can be used to help look at some fundamental questions e.g.

- Does the age profile of the population match or differ from the national profile?
- Is there evidence of the ageing profile of the county in all the wards in the Division or just some?
- How diverse is the community in terms of ethnicity?
- What is the impact of deprivation on families and residents?
- Does there seem to be a link between deprivation and school performance?
- What is the breakdown of employment sectors in the area?
- Is it a relatively healthy area compared to the rest of the district or county?
- What sort of crimes are prevalent in the community?

A vast amount of additional data is available on the **Suffolk Observatory**

www.suffolkobservatory.info

The Suffolk Observatory is a free online resource that contains all Suffolk's vital statistics; it is the one-stop-shop for information and intelligence about Suffolk. Through data, reports and profiles, the Suffolk Observatory provides a comprehensive picture of the County. It is a great source for useful facts and figures that can be used for writing reports and presentations, informing strategic and business planning, preparing funding applications or supporting academic research. Data is presented around the key themes of education and skills, economy and employment, health and care, population, deprivation, housing, environment, transport and travel and crime. All areas of the county are covered, right down to district, ward and parish level, with information easily accessible in a variety of formats. You can also build your own reports by different themes and topics.

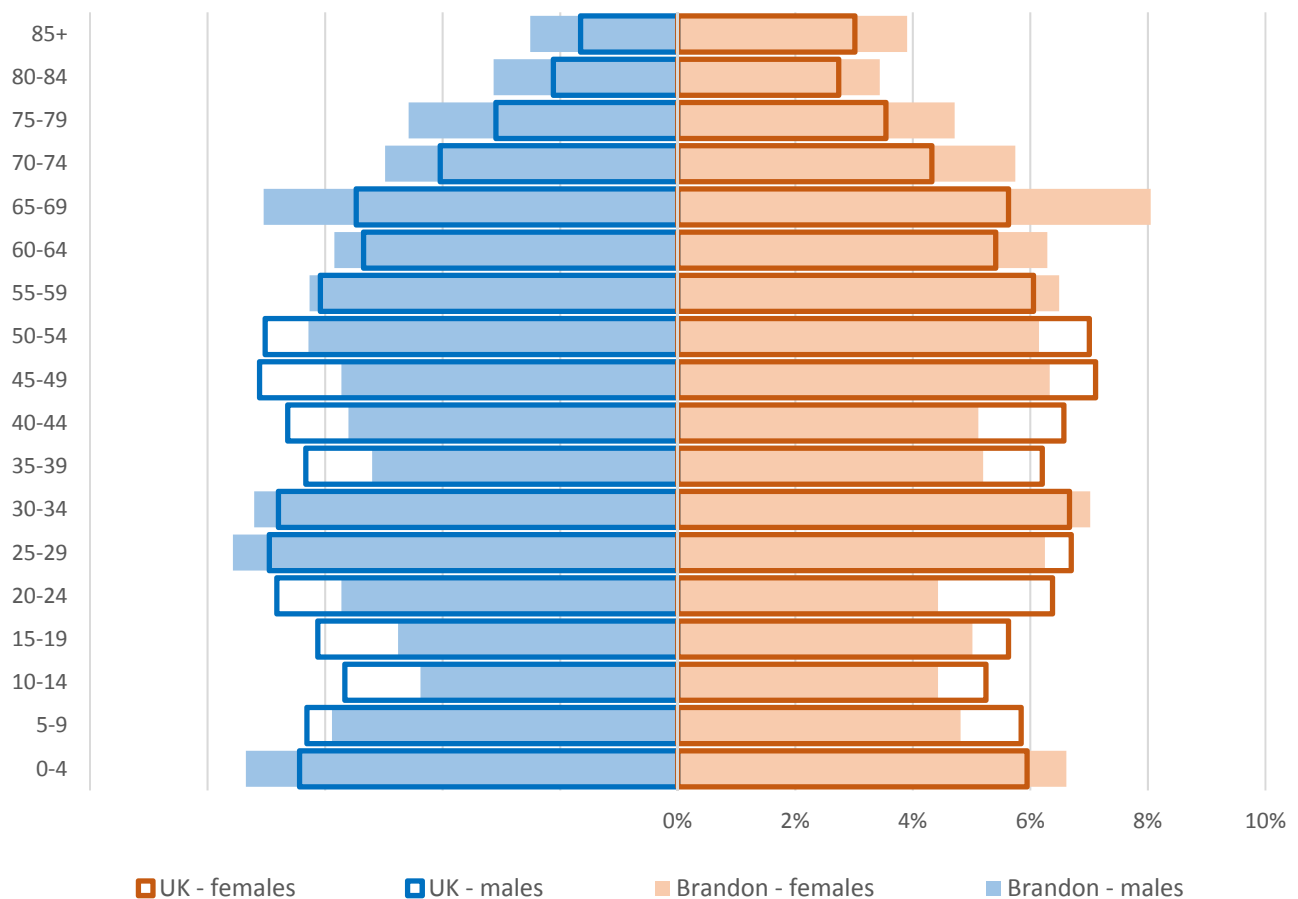
Technical Notes:

1. Where Electoral Divisions do not exactly match ward boundaries, we have adopted a "best fit" approach to produce a dataset.
2. District, county and national level data is provided where possible to provide a context for comparisons.

DEMOGRAPHIC PROFILE - AGE

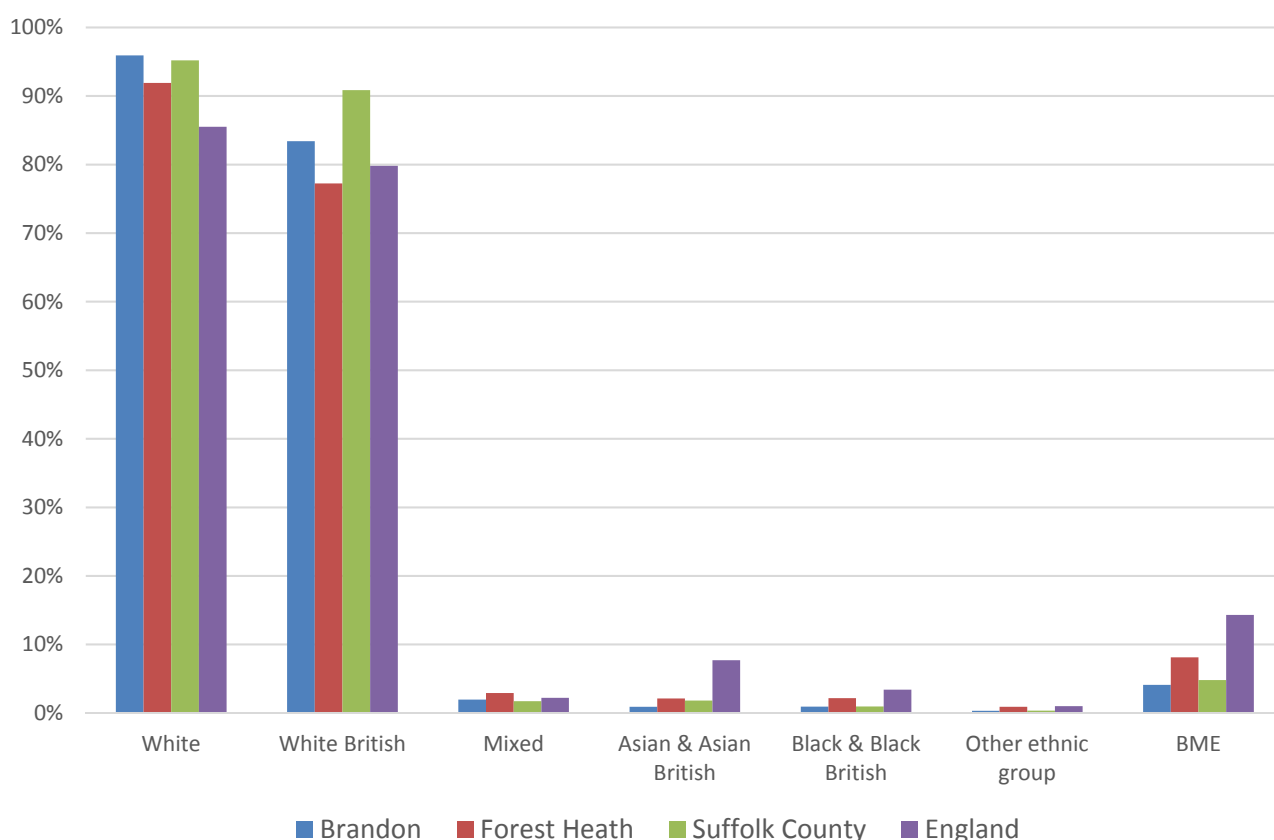
In mid-2015 the population of Brandon stood at 9,926, an increase of 3.0% since the 2011 Census. The age structure of the component wards and the Division as a whole is set out below.

	Brandon Division	Brandon East	Brandon West
All Ages	9,926	6,062	3,864
0-4	693	439	254
5-9	531	344	187
10-14	437	261	176
15-19	485	273	212
20-24	504	284	220
25-29	686	465	221
30-34	706	452	254
35-39	516	318	198
40-44	532	313	219
45-49	598	346	252
50-54	617	363	254
55-59	633	417	216
60-64	602	354	248
65-69	749	427	322
70-74	532	321	211
75-79	461	282	179
80-84	326	214	112
85+	318	189	129



- The age pyramid for Brandon shows a higher than average proportion of population over the age of 65
- The commonest age group in Brandon is 65-69 year olds, followed by 30-34 year olds
- With the exception of the 25-34 age range, there is a lower than average proportion of people of working age and relatively few teenagers and young adults in the division compared to the national average
- The proportion of young children aged 0-4 in the division is higher than average

ETHNICITY

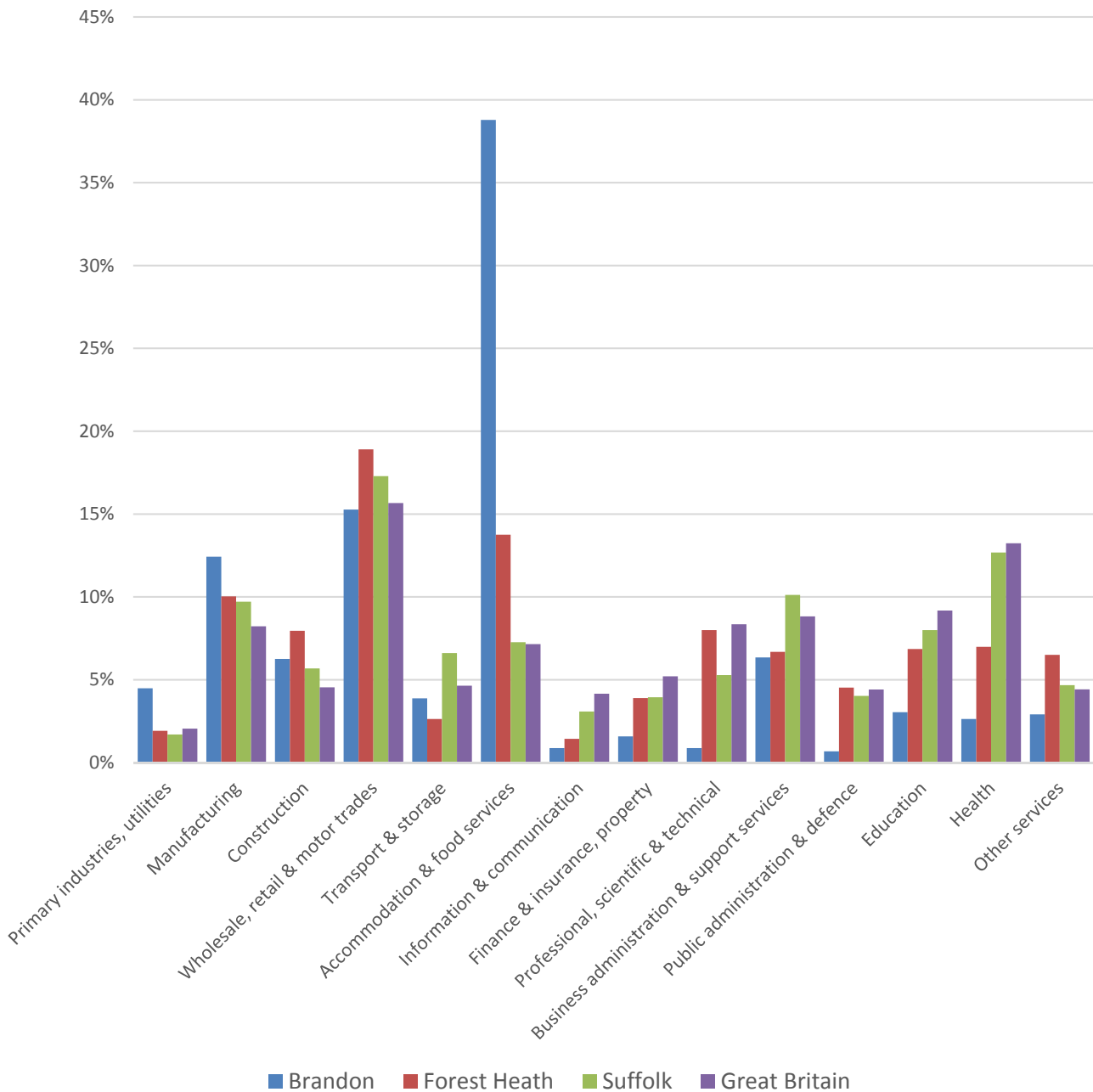


- According to the latest data (2011 Census), 95.9% of the population of Brandon are white, a higher proportion than in Forest Heath generally and more than the Suffolk average.
- Within the Division 4.1% of the population are people of black or minority ethnic origin
- Brandon has a less diverse population than the district as a whole, and a lower proportion of minority ethnic groups than the county

	All people	White		White British		Mixed		Asian and Asian British		Black and Black British		Other Ethnic Group		Black or Minority Ethnic Total	
	Count	Count	%	Count	%	Count	%	Count	%	Count	%	Count	%	Count	%
Brandon	9,636	9,242	95.9	8,035	83.4	187	1.9	88	0.9	89	0.9	30	0.3	394	4.1
Forest Heath	59,748	54,907	91.9	46,142	77.2	1,744	2.9	1,263	2.1	1,296	2.2	538	0.9	4,841	8.1
Suffolk	728,163	693,195	95.2	661,458	90.8	12,472	1.7	13,131	1.8	6,854	0.9	2,511	0.3	34,968	4.8
England & Wales			86.0		80.5		2.2		6.7		2.8		0.4		12.1

ECONOMY

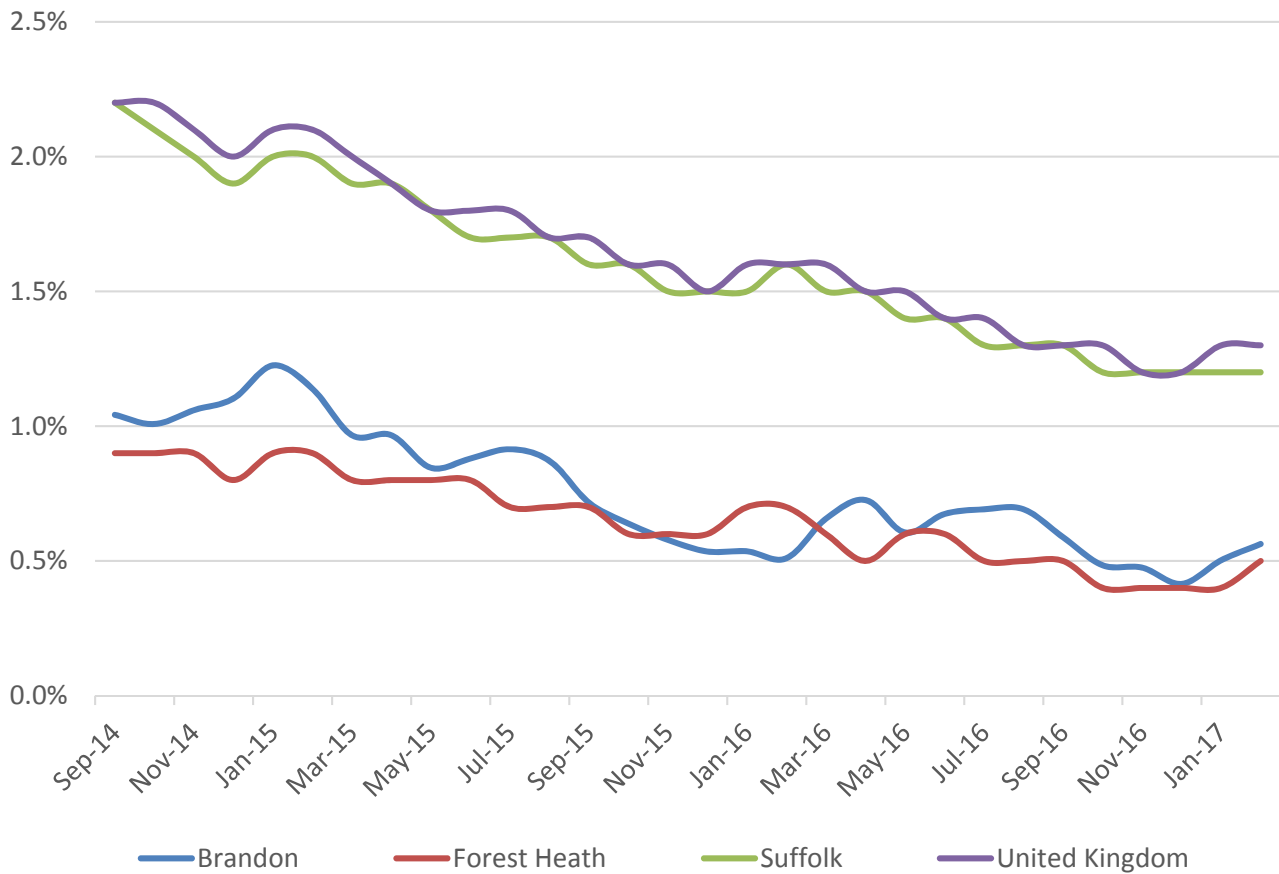
There are 4,700 people employed in Brandon.



- The key employment sectors are accommodation & food services, wholesale, retail & motor trades, and manufacturing
- The accommodation and food services sector is dominant in Brandon, with nearly 40% of jobs being in this sector. This sector is particularly significant in that there is a far higher proportion of people working in this sector than in the district, county and nationally
- Together with wholesale, retail and motor trades, these account for over half of all jobs in Brandon division

LABOUR MARKET

JOB SEEKERS ALLOWANCE CLAIMANT RATE



- Around 0.6% of the working age population (aged 16-64) are claiming JSA in Brandon compared to twice that level across Suffolk and the UK as a whole
- There has been a reduction in claimant unemployment in the division since 2014, in line with the county and national trends
- Brandon in general has a similar proportion of JSA claimants than Forest Heath as a whole but still well below county and national levels

SCHOOLS

SCHOOL INFORMATION

Schools in the Division

Name	Phase	Average cohort size at:			Latest Ofsted	Latest Ofsted Date
		Foundation Stage (age 5)	KS2 (age 11)	KS4 (age 16)		
Elveden Church of England Primary Academy	Primary	11	11		Outstanding	02/02/2016
Forest Academy	Primary	49	43		Good	22/05/2014
Glade CP School	Primary	51	27		Good	07/02/2013
IES Breckland	Upper		32	43	Requires Improvement	03/11/2015

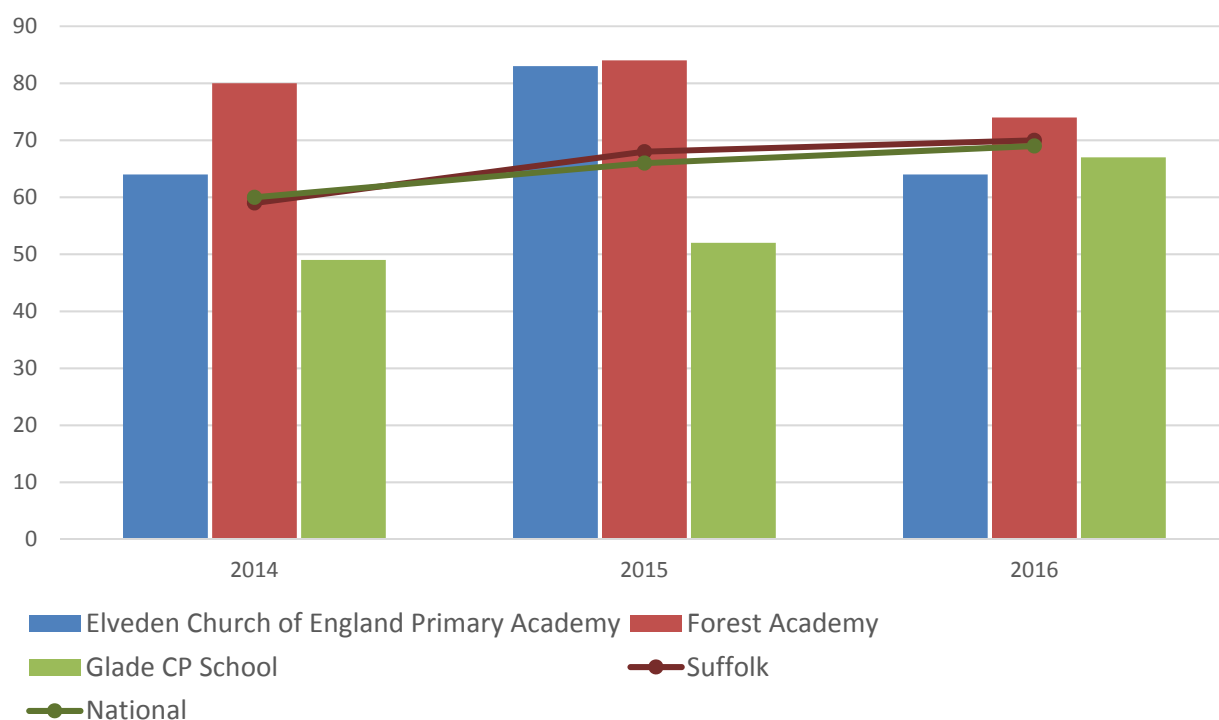
School Catchment overlaps with the Division

Name	Phase	Average cohort size at:			Latest Ofsted	Latest Ofsted Date
		KS2 (age 11)	KS4 (age 16)	KS5 (age 18)		
Mildenhall College Academy	Upper	13	192	52	Good	10/03/2015

SCHOOL ATTAINMENT

Foundation Stage Profile (reception)

% pupils achieving Good Level of Development (GLD)



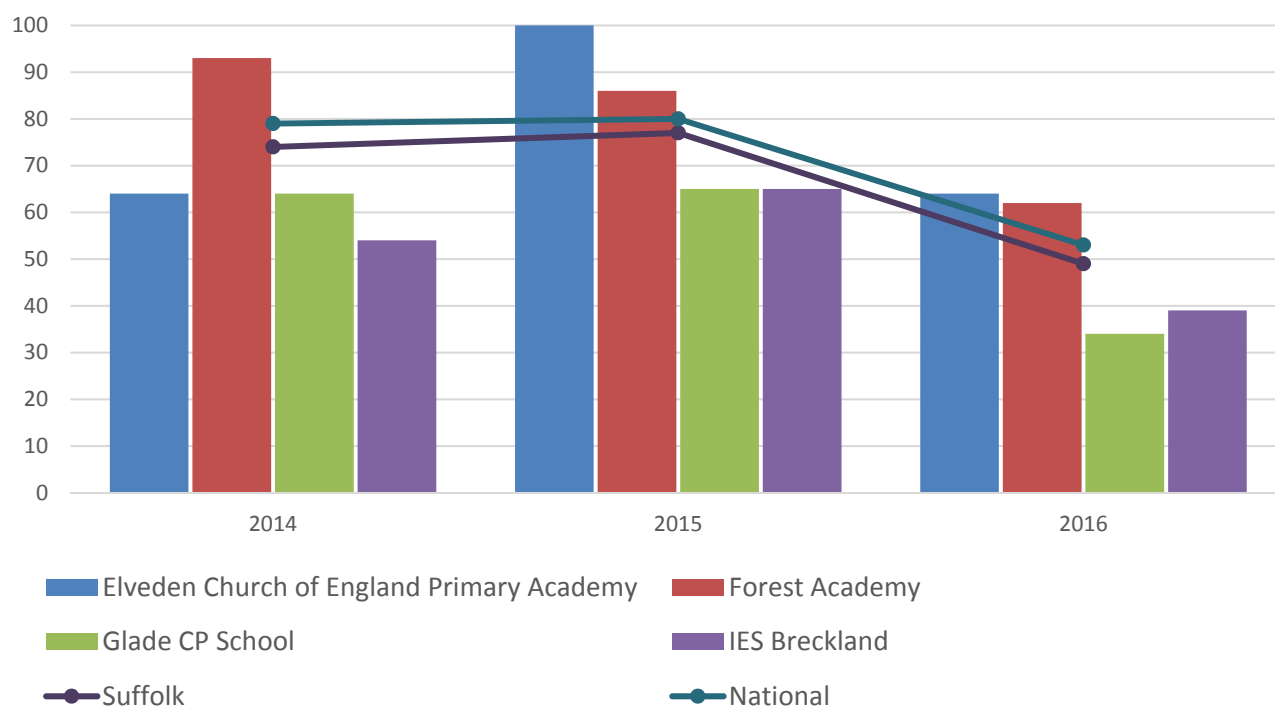
- Foundation Stage attainment across schools in Brandon division from 2014 to 2016 has been mixed
- Attainment at Forest Academy has been consistently above the Suffolk and national average throughout the period
- The Glade CP School has seen improvements in Foundation Stage attainment in each of the past three years but the percentage of pupils achieving a Good Level of Development at the school remains below average
- Attainment at Elveden Church of England Primary Academy was high in 2014 and 2015 but dipped below average in 2016

Key Stage 2 (age 11)

Pupil Achievement in all three subjects, Reading, Writing and Mathematics
(2014 – 2015 as % Level 4 or better) & (2016 % Expected Level or better)

In July 2016, the way pupil achievement was measured at the End KS2 changed.

In 2014 and 2015 pupils received National Curriculum Level grades for English and Maths, with L4 being the expected level at the end of Key Stage 2. In 2016 the measure scaled score and shows whether or not a pupil has achieved the national standard for that subject

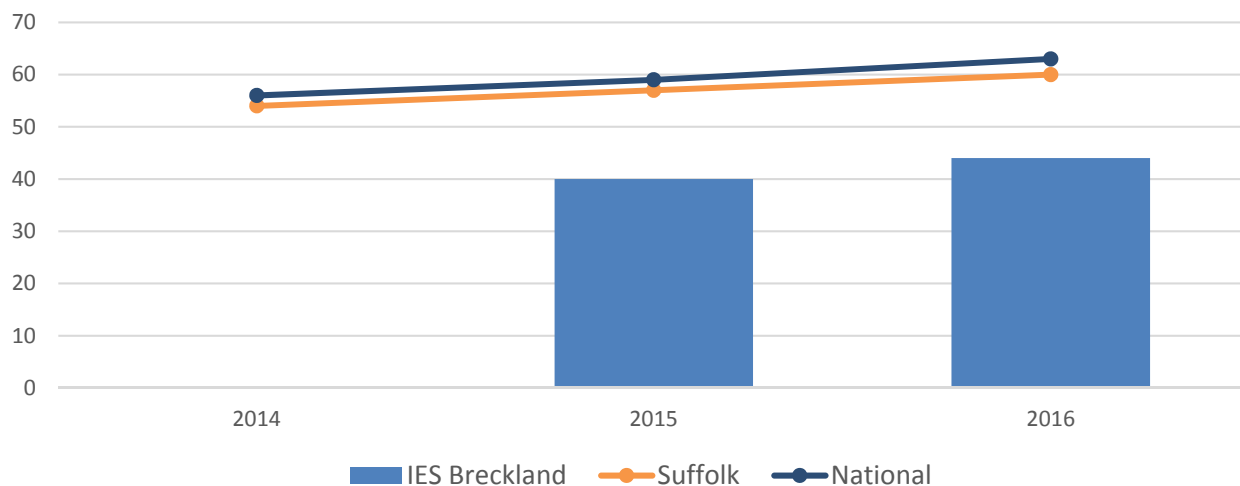


- Key Stage 2 attainment at schools in Brandon division over the past three years has been quite variable
- Forest Academy has seen above average KS2 attainment in each of the past three years
- Attainment at Glade CP School and IES Breckland has been consistently below average throughout the 2014 to 2016 period
- Elveden Church of England Primary Academy has seen above average attainment in the last two years following below average levels in 2014

GCSE (Key Stage 4) (age 16)

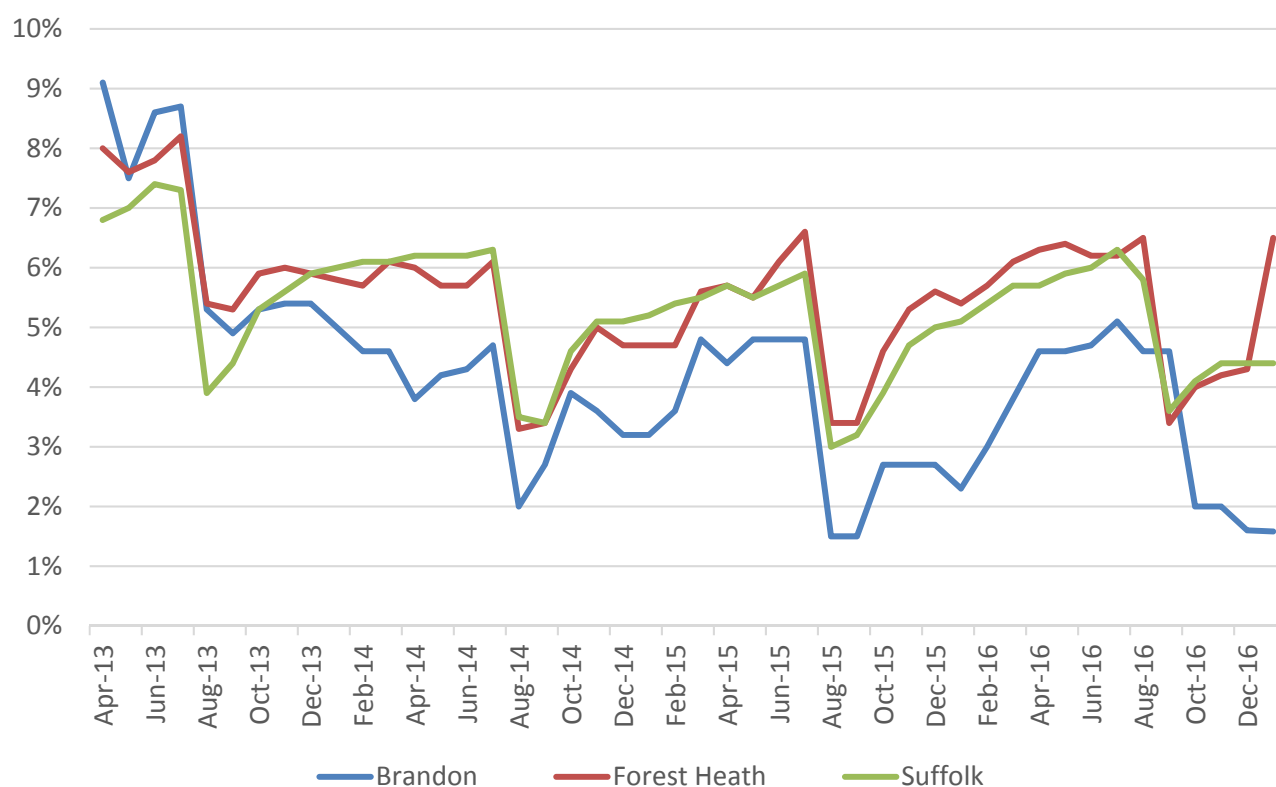
% pupils achieving five or more GCSEs (or equivalent) at A*-C including English and Mathematics

In July 2016, an additional measure of pupil achievement at Key Stage 4 was introduced but for the purposes of this profile and to demonstrate change over time, we have presented consistent data for the period 2014-2016 using the % pupils achieving five or more GCSEs (or equivalent) at A*-C including English and Mathematics.



- GCSE attainment at IES Breckland, though rising, remains well below the Suffolk and national averages

NEET % (NOT IN EDUCATION, EMPLOYMENT OR TRAINING)

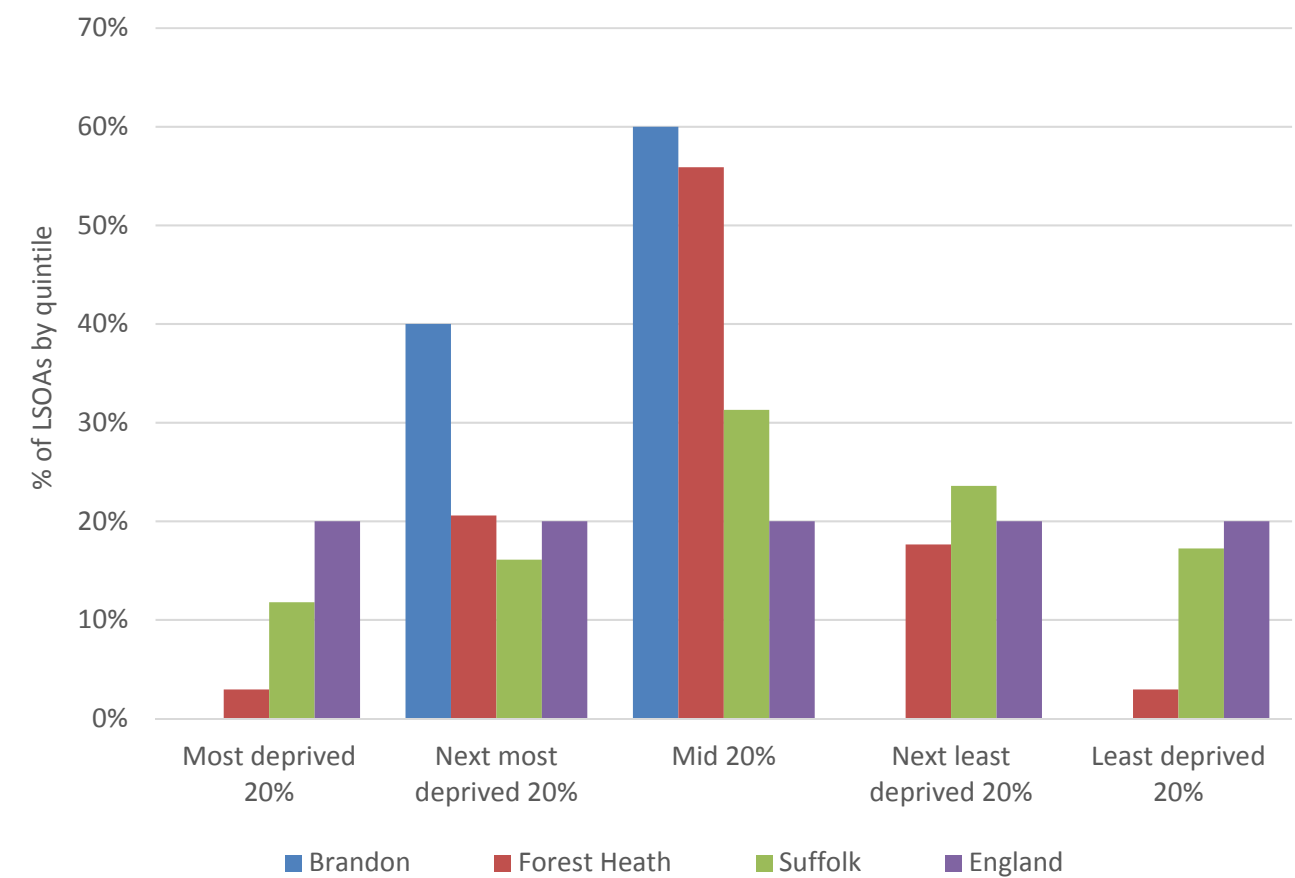


- In January 2017, 1.6% of 16-18 year olds were classified as NEET in Brandon (where current activity was known)
- Until the last few months, the trend within Brandon mirrored that in Forest Heath and the county as a whole, but with the proportion of 16-18 year olds NEET generally at a level lower. At the end of 2016 whilst both county and district took a jump in NEET levels, Brandon has seen a further reduction

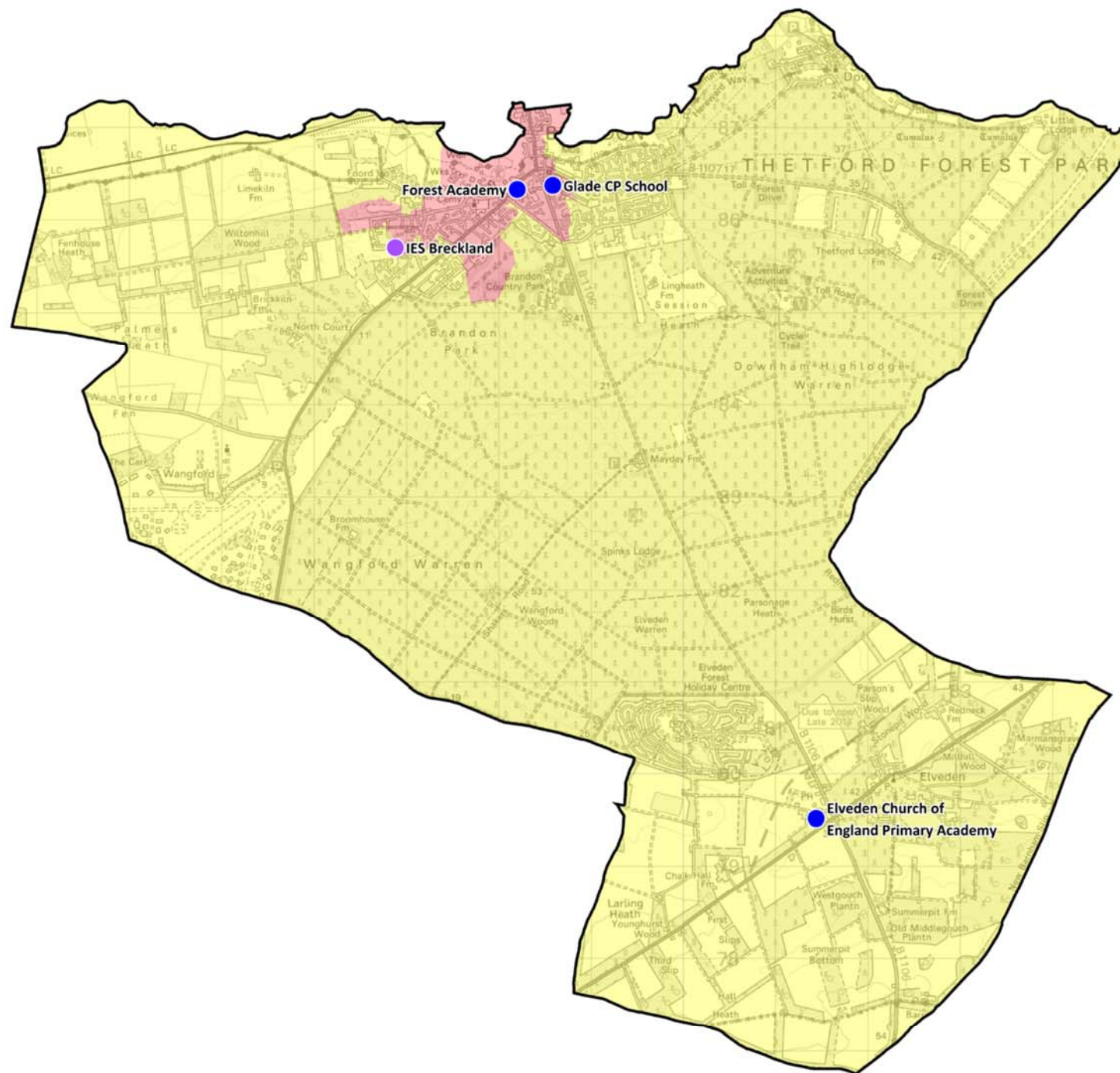
INDEX OF MULTIPLE DEPRIVATION (IMD) 2015 (SEE MAP OVERLEAF)

The IMD combines a number of indicators, chosen to cover a range of economic, social and housing issues, into a single deprivation score for each small area in England. This allows each area to be ranked relative to one another according to their level of deprivation. Small areas (Lower Super Output Areas, average population 1,500) are most usually described as being in 1 of 5 quintile bands. The bottom quintile represents the 20% of areas that are the most deprived in the country; these are shaded red on the map. The top quintile represents the least deprived areas in the country, and is shaded green.

The Index is widely used to analyse patterns of deprivation, identify areas that would benefit from special initiatives or programmes and as a tool to determine eligibility for specific funding streams.



- The IMD 2015 shows that relative deprivation levels in Brandon are moderate to high
- Of the five Lower Layer Super Output Areas (LSOA) in division, three are in the mid quintile (20%) and the remaining two among the next most deprived 20% of areas in England



IMD 2015 quintile



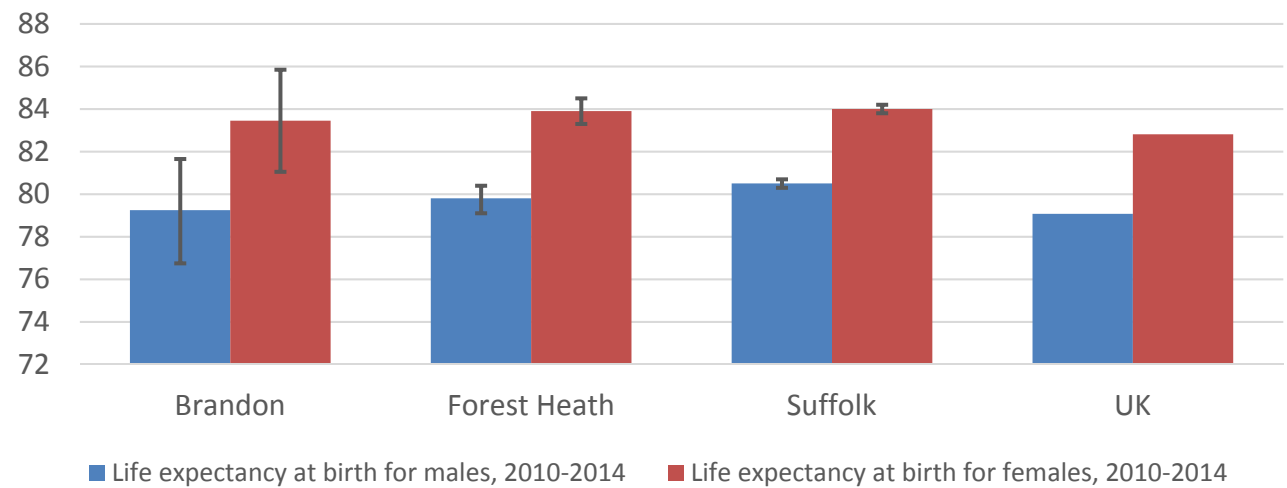
School Type



HEALTH

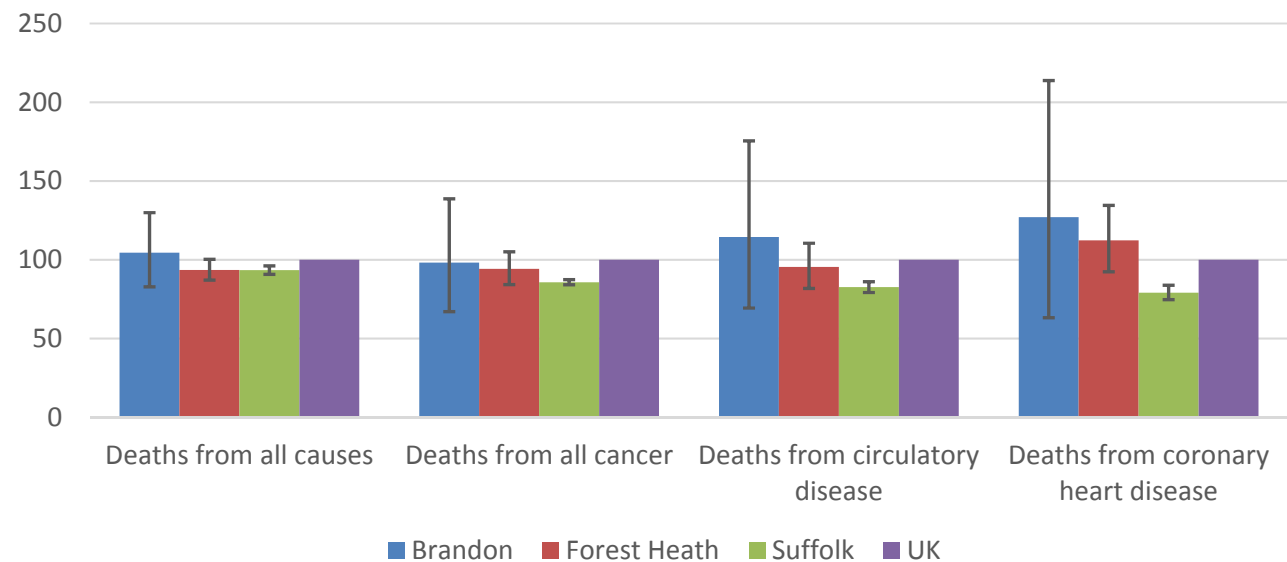
The local data used here is based on relatively small numbers. The confidence limits provide an indication of the reliability of the data. The 95% confidence intervals utilised on the chart provide a range within which there is 95% chance of the true result lying.

LIFE EXPECTANCY AT BIRTH



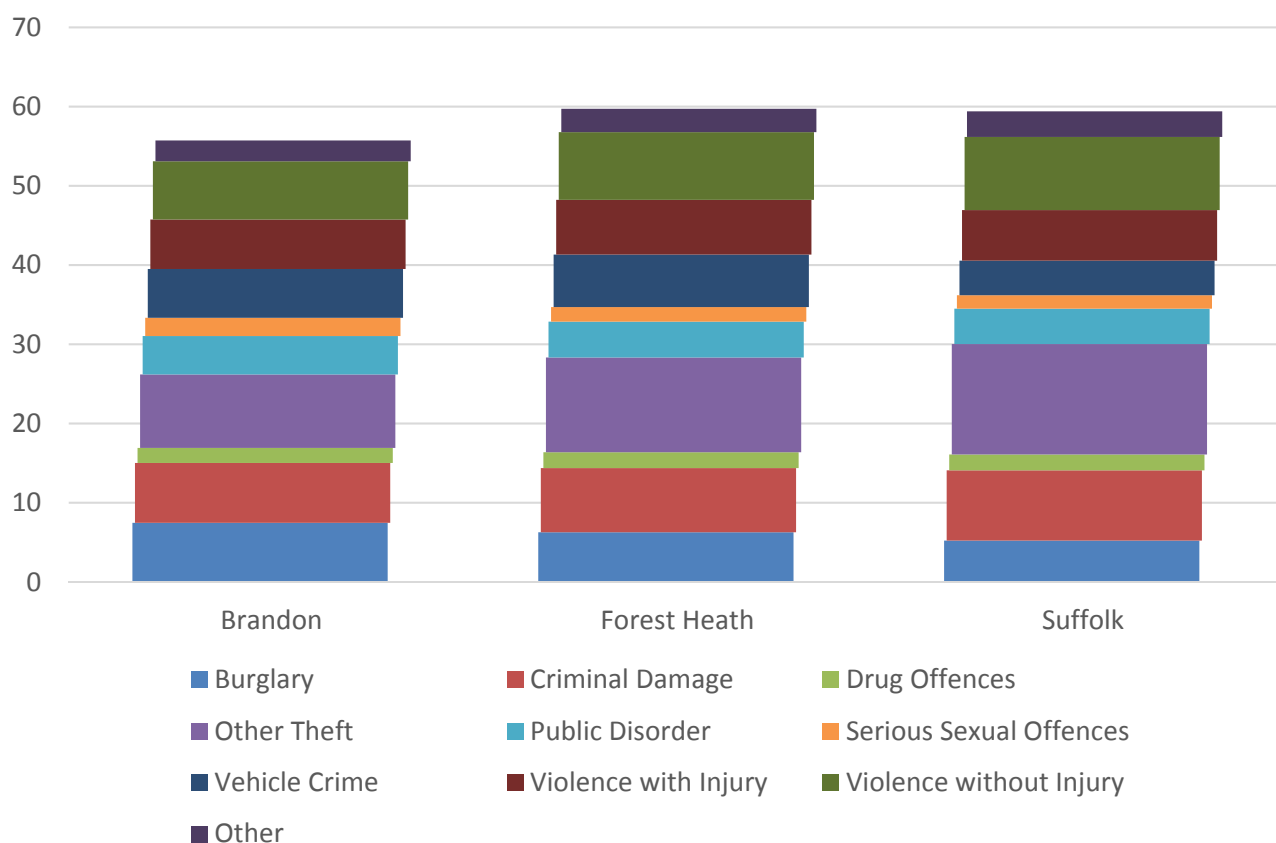
- Life expectancy estimates for males and females in Brandon are between the Forest Heath and UK averages, and slightly below the Suffolk level

DEATHS, UNDER 75 YEARS, STANDARDISED MORTALITY RATIO



- Early deaths (under the age of 75) in Brandon occur at a slightly higher rate for all causes than is seen across the district, county and UK as a whole
- For every 100 early deaths from all causes that occur across the UK, the estimates show that 105 comparable deaths occur in Brandon, though the confidence intervals around the local data are significant

CRIME & COMMUNITY SAFETY



- Brandon has a marginally lower crime rate than Forest Heath and Suffolk in general
- In 2015, there were just under 56 recorded crimes per 1,000 residents in Brandon compared to 60 in Forest Heath and 59 across the county as a whole
- “Other theft”, criminal damage and burglary are the most common types of crime in the division
- Brandon sees higher levels of burglary, public disorder, serious sexual offences and vehicle crime compared to Suffolk as a whole

ADDITIONAL INFORMATION

Parishes in Division

Brandon
Elveden
Santon Downham
Wangford

DATA SOURCES

Category	Indicator	Source
Demographic Profile	Quinary population table 2015	ONS 2015 mid-year population estimates
	Population pyramid 2015	ONS 2015 mid-year population estimates
	Ethnicity 2011	ONS 2011 Census
Economy	Employment by broad industrial sector 2015	ONS Business Register and Employment Survey via NOMIS
Labour market	Job Seekers Allowance Claimant Rate (% 16-64 population) 2014-2017	DWP via NOMIS
Education	School information and attainment 2014-2016	Suffolk County Council
	% 16-18 year olds NEET (Not in Employment, Education or Training) 2013-2017	Suffolk County Council
Deprivation	Index of Multiple Deprivation 2015	Department for Communities and Local Government
Health	Life expectancy at birth 2010-2014	Public Health England
Health	Standardised mortality ratio for deaths from all causes, cancer, circulatory disease and coronary heart disease, aged under 75 2010-2014. The standardised mortality ratio is the ratio of observed deaths in the study group to expected deaths in the general population.	Public Health England
Community Safety	Recorded crime rate per 1,000 resident population 2015	Suffolk Police

For more data and information about Brandon Electoral Division, see the Suffolk Observatory www.suffolkobservatory.info

