

HADLEIGH

ELECTORAL DIVISION PROFILE 2017

This Division comprises Hadleigh North and Hadleigh South wards

www.suffolkobservatory.info



CONTENTS

- Demographic Profile: Age & Ethnicity
- Economy and Labour Market
- Schools & NEET
- Index of Multiple Deprivation
- Health
- Crime & Community Safety
- Additional Information
- Data Sources

ELECTORAL DIVISION PROFILES: AN INTRODUCTION

These profiles have been produced to support elected members, constituents and other interested parties in understanding the demographic, economic, social and educational profile of their neighbourhoods. We have used the latest data available at the time of publication.

Much more data is available from national and local sources than is captured here, but it is hoped that the profile will be a useful starting point for discussion, where local knowledge and experience can be used to flesh out and illuminate the information presented here.

The profile can be used to help look at some fundamental questions e.g.

- Does the age profile of the population match or differ from the national profile?
- Is there evidence of the ageing profile of the county in all the wards in the Division or just some?
- How diverse is the community in terms of ethnicity?
- What is the impact of deprivation on families and residents?
- Does there seem to be a link between deprivation and school performance?
- What is the breakdown of employment sectors in the area?
- Is it a relatively healthy area compared to the rest of the district or county?
- What sort of crime is prevalent in the community?

A vast amount of additional data is available on the **Suffolk Observatory**

www.suffolkobservatory.info

The Suffolk Observatory is a free online resource that contains all Suffolk's vital statistics; it is the one-stop-shop for information and intelligence about Suffolk. Through data, reports and profiles, the Suffolk Observatory provides a comprehensive picture of the County. It is a great source for useful facts and figures that can be used for writing reports and presentations, informing strategic and business planning, preparing funding applications or supporting academic research. Data is presented around the key themes of education and skills, economy and employment, health and care, population, deprivation, housing, environment, transport and travel and crime. All areas of the county are covered, right down to district, ward and parish level, with information easily accessible in a variety of formats. You can also build your own reports by different themes and topics.

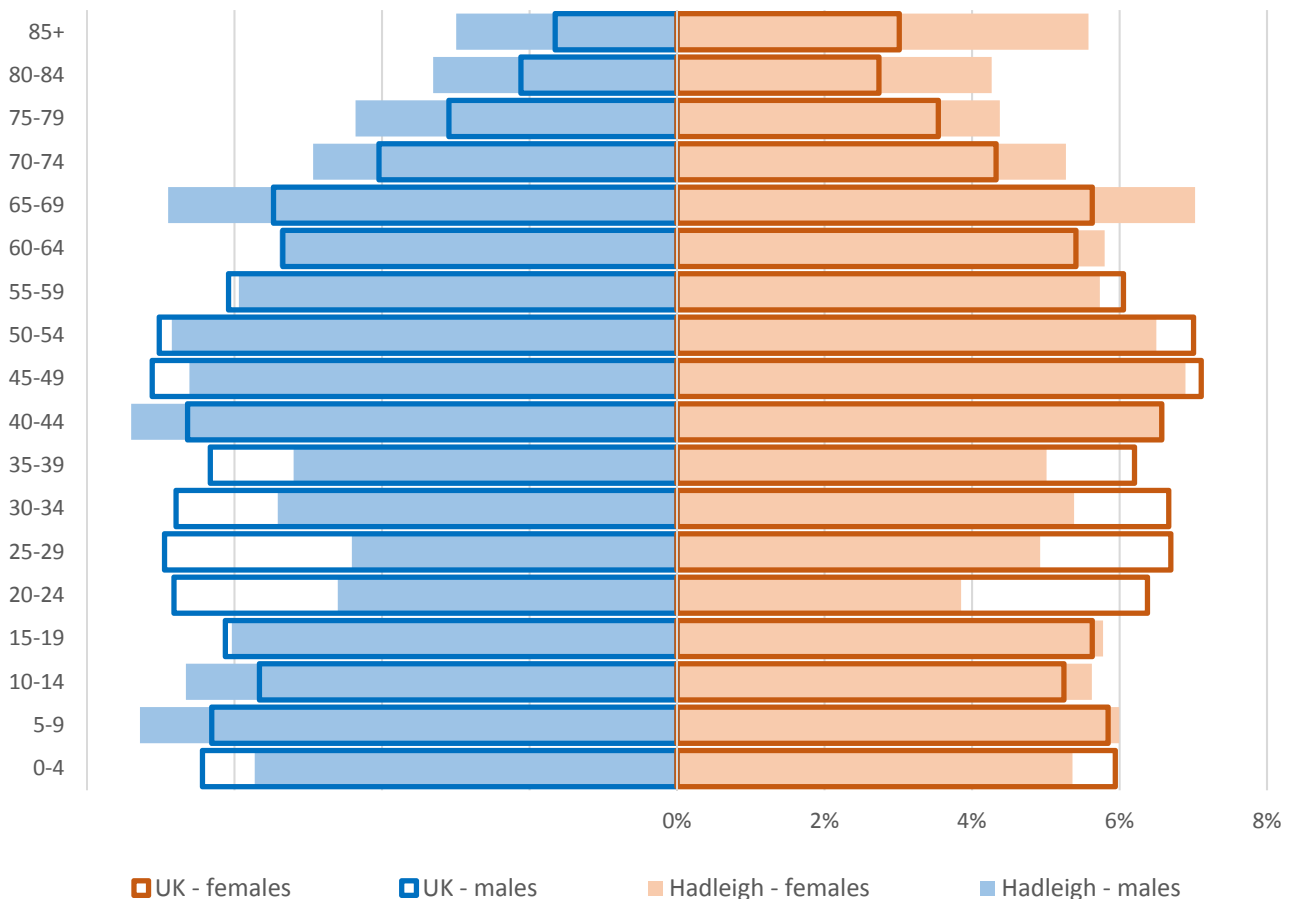
Technical Notes:

1. Where Electoral Divisions do not exactly match ward boundaries, we have adopted a "best fit" approach to produce a dataset.
2. District, county and national level data is provided where possible to provide a context for comparisons.

DEMOGRAPHIC PROFILE - AGE

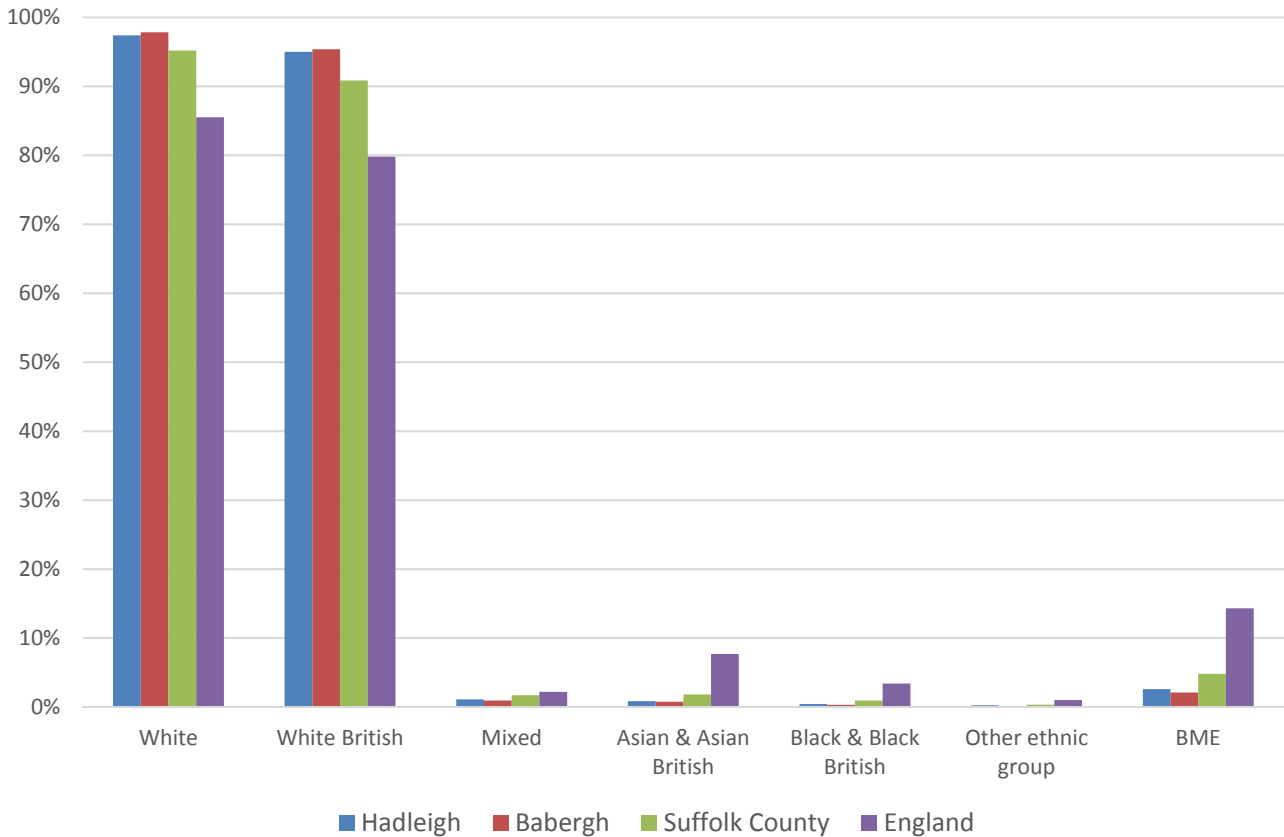
In mid-2015 the population of Hadleigh stood at 8,744, an increase of 5.9% since the 2011 Census. The age structure of the component wards and the division as a whole is set out below.

	Hadleigh Division	Hadleigh North	Hadleigh South
All Ages	8,744	5,048	3,696
0-4	484	349	135
5-9	578	378	200
10-14	535	345	190
15-19	516	297	219
20-24	368	214	154
25-29	409	267	142
30-34	472	329	143
35-39	446	299	147
40-44	611	370	241
45-49	591	298	293
50-54	583	278	305
55-59	510	263	247
60-64	490	274	216
65-69	609	327	282
70-74	447	214	233
75-79	382	203	179
80-84	333	164	169
85+	380	179	201



- The age pyramid for Hadleigh shows a higher than average proportion of people over the age of 65
- The most common age group in Hadleigh is 40-44 year olds, followed by 65-69 year olds
- There is a much lower than average number of people of working age, particularly 20-39 year olds

ETHNICITY

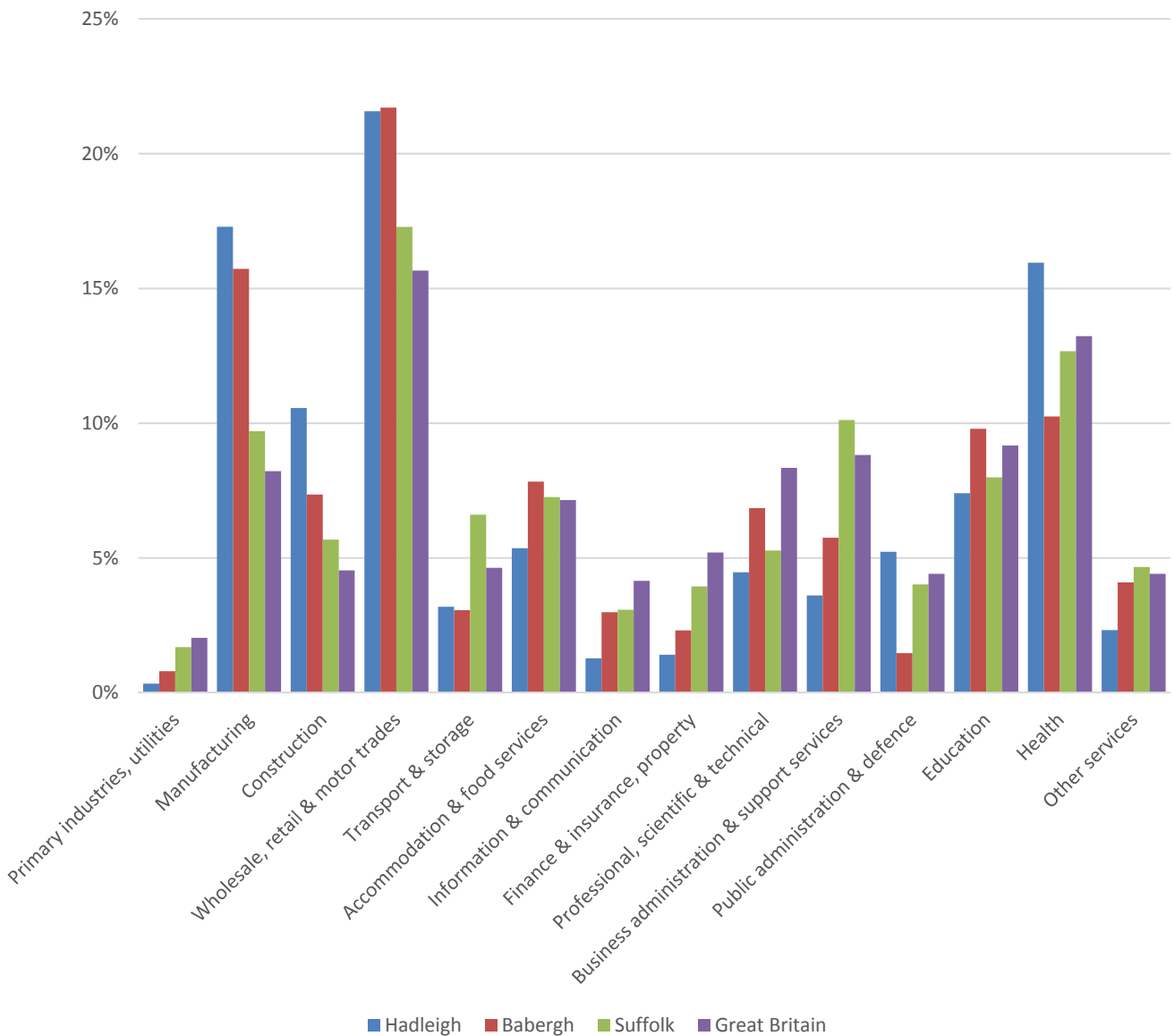


- According to the latest data (2011 Census), 97.4% of the population of Hadleigh are white, which is slightly above average for a Division in Suffolk.
- The 2.6% people of black or minority ethnic origin, is more than double the number at the time of the 2001 Census whilst being more than five times lower proportion than nationally
- Hadleigh has a similar diversity profile to Babergh district, and generally lower proportions of minority ethnic groups than Suffolk as a whole

	All people	White		White British		Mixed		Asian and Asian British		Black and Black British		Other Ethnic Group		Black or Minority Ethnic Total	
	Count	Count	%	Count	%	Count	%	Count	%	Count	%	Count	%	Count	%
Hadleigh	8,253	8,039	97.4	7,840	95.0	90	1.1	70	0.8	34	0.4	20	0.2	214	2.6
Babergh	87,740	85,845	97.8	83,666	95.4	827	0.9	666	0.8	264	0.3	138	0.2	1,895	2.2
Suffolk	728,163	693,195	95.2	661,458	90.8	12,472	1.7	13,131	1.8	6,854	0.9	2,511	0.3	34,968	4.8
England & Wales			86		80.5		2.2		6.7		2.8		0.4		12.1

ECONOMY

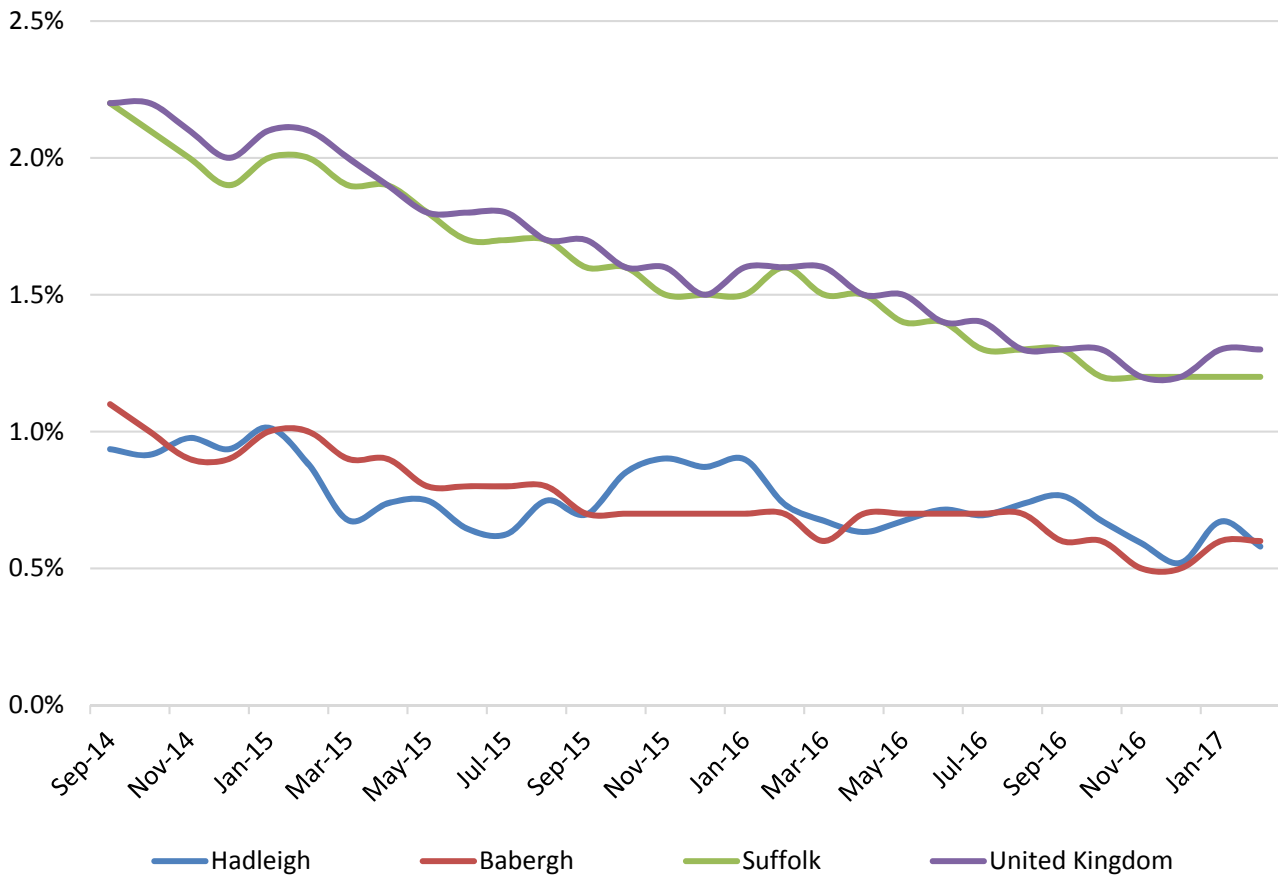
There are 3,900 people employed in Hadleigh.



- The key employment sectors in Hadleigh are wholesale, retail & motor trades, manufacturing, health, construction and education
- Around two thirds of jobs in Hadleigh are provided by these four sectors
- Manufacturing and the wholesale, retail and motor trades, construction and health are particularly important as the proportion of these sectors in Hadleigh is much higher than the national average

LABOUR MARKET

JOB SEEKERS ALLOWANCE CLAIMANT RATE



- There has been a reduction in the Job Seekers Allowance claimant rate in Hadleigh since 2014, in line with the county and national downward trends
- Hadleigh has a very similar claimant unemployment rate to Babergh as a whole but well below county and national levels
- Around 0.6% of the working age population (aged 16-64) are claiming JSA in Hadleigh compared to twice that level across Suffolk and the UK as a whole

SCHOOLS

SCHOOL INFORMATION

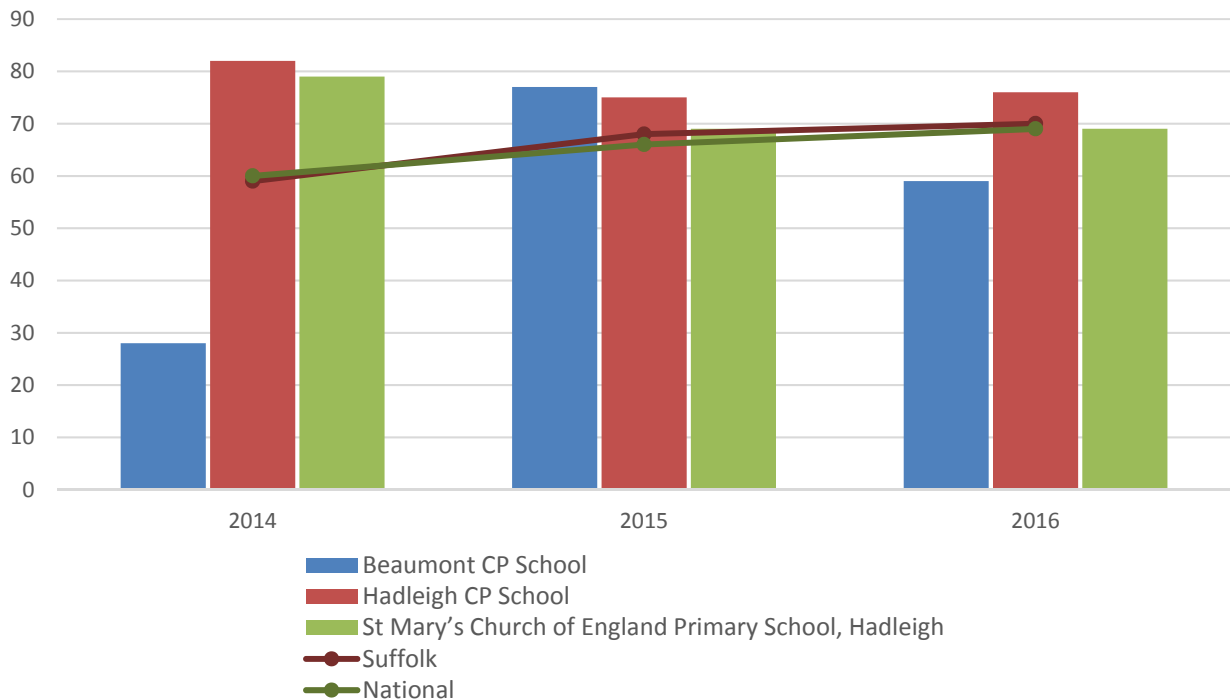
Schools in the Division

Name	Phase	Average cohort size at:			Latest Ofsted	Latest Ofsted Date
		Foundation Stage (age 5)	KS2 (age 11)	KS4 (age 16)		
Beaumont CP School	Primary	17	17		Requires Improvement	24/05/2016
Hadleigh CP School	Primary	75	75		Good	25/05/2016
St Mary's Church of England Primary School	Primary	22	28		Not yet inspected as an Academy	
Hadleigh High School	Upper			156	Good	20/10/2015

SCHOOL ATTAINMENT

Foundation Stage Profile (Reception)

% pupils achieving Good Level of Development (GLD)

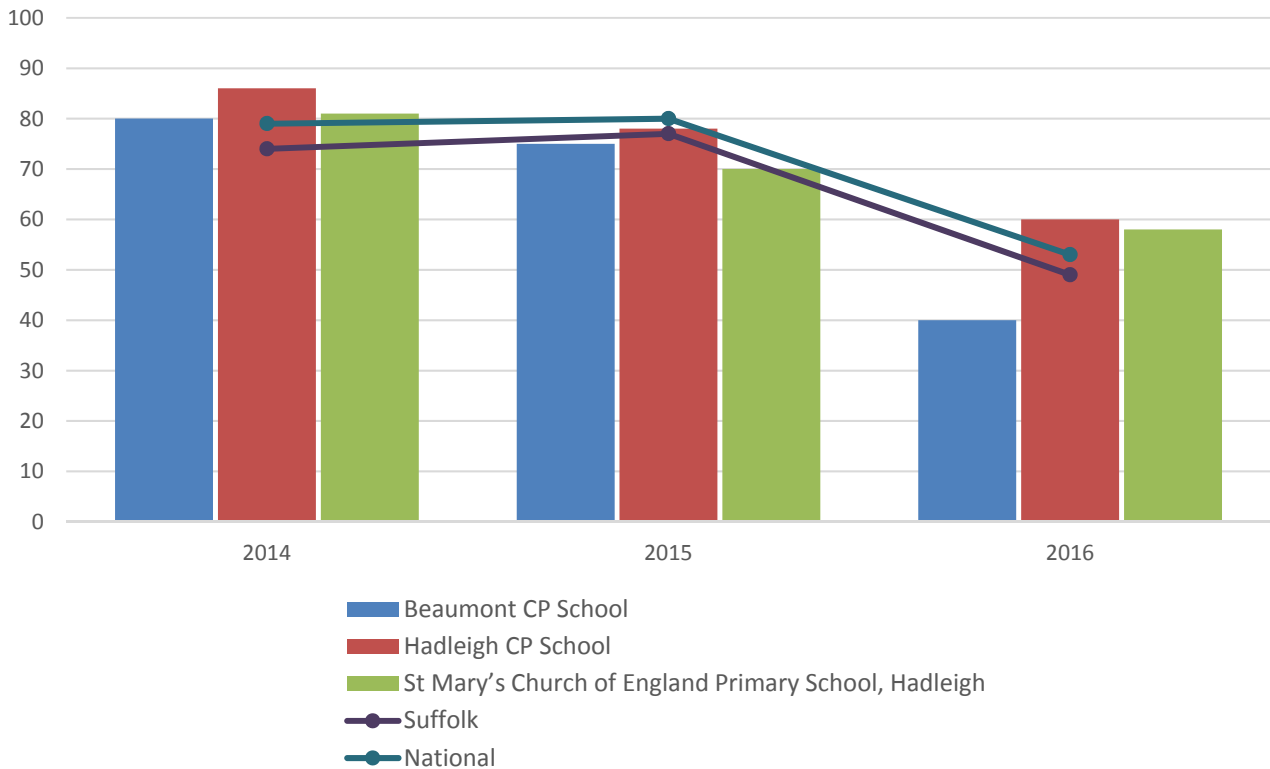


- Foundation Stage attainment at Hadleigh CP School has been consistently above the Suffolk and national averages from 2014 to 2016, while at St Mary's Church of England Primary attainment has been above or equal to the national average throughout the period
- Attainment at Beaumont CP School has been more variable. In 2014 attainment was very low, before improving beyond the Suffolk and national averages in 2015 but returning to below average in 2016

Key Stage 2 (age 11)

Pupil Achievement in all three subjects, Reading, Writing and Mathematics
(2014 – 2015 as % Level 4 or better) & (2016 % Expected Level or better)

In July 2016, there was a change in the way pupil achievement is measured at the end of KS2. Prior to 2016, pupils received National Curriculum Level grades for English and Maths, with L4 being the expected level at the end of Key Stage 2. In 2016 the measure scaled score and shows whether or not a pupil has achieved the national standard for that subject

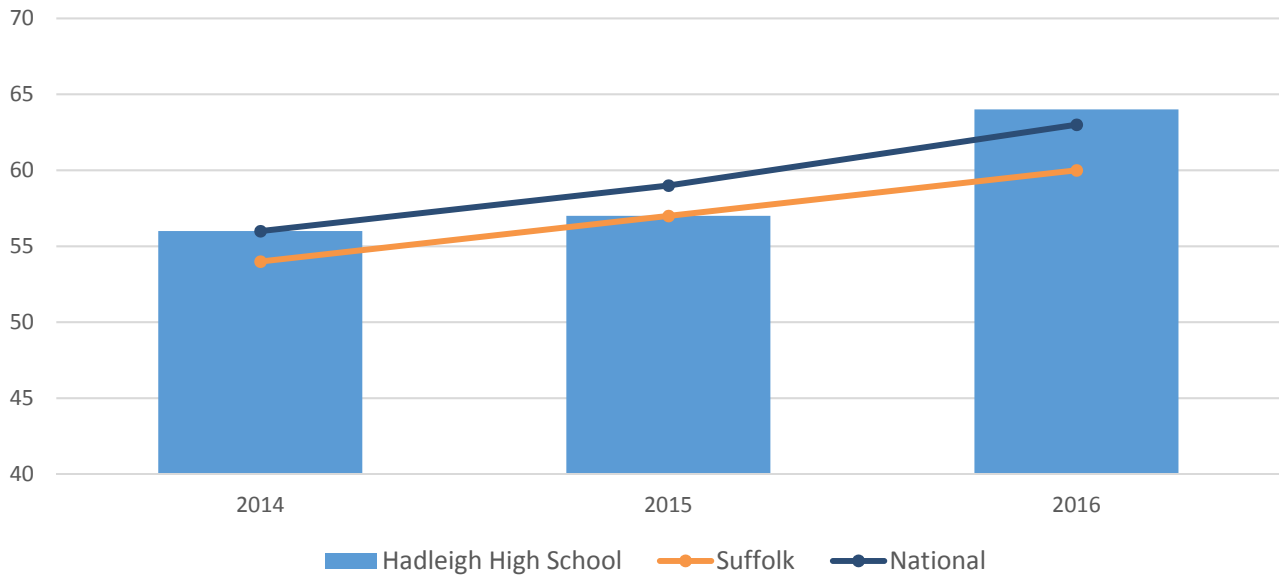


- Key Stage 2 attainment at Hadleigh CP and St Mary's Church of England Primary Schools has been consistently good; above the Suffolk average in each of the past three years and only dipping slightly below the national level in 2015
- Attainment at Beaumont CP School has declined from 2014 to 2016 and has been below the Suffolk and national averages in 2015 and 2016

GCSE (Key Stage 4) (age 16)

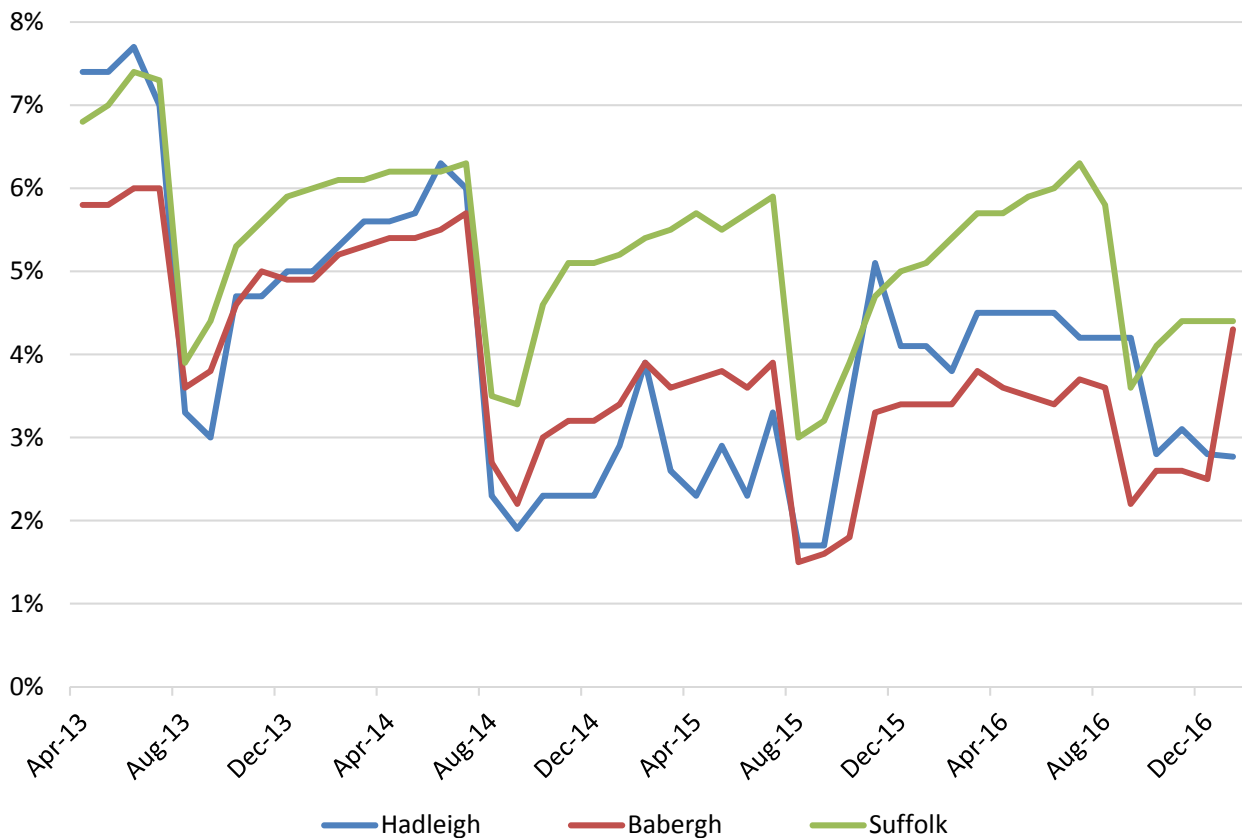
% pupils achieving five or more GCSEs (or equivalent) at A*-C including English and Mathematics

In July 2016, an additional measure of pupil achievement at Key Stage 4 was introduced but for the purposes of this profile and to demonstrate change over time, we have presented consistent data for the period 2014-2016 using the % pupils achieving five or more GCSEs (or equivalent) at A*-C including English and Mathematics.



- GCSE attainment at Hadleigh High school has improved greatly over the last three years and in 2016 was above the Suffolk and national average

NEET % (NOT IN EDUCATION, EMPLOYMENT OR TRAINING)

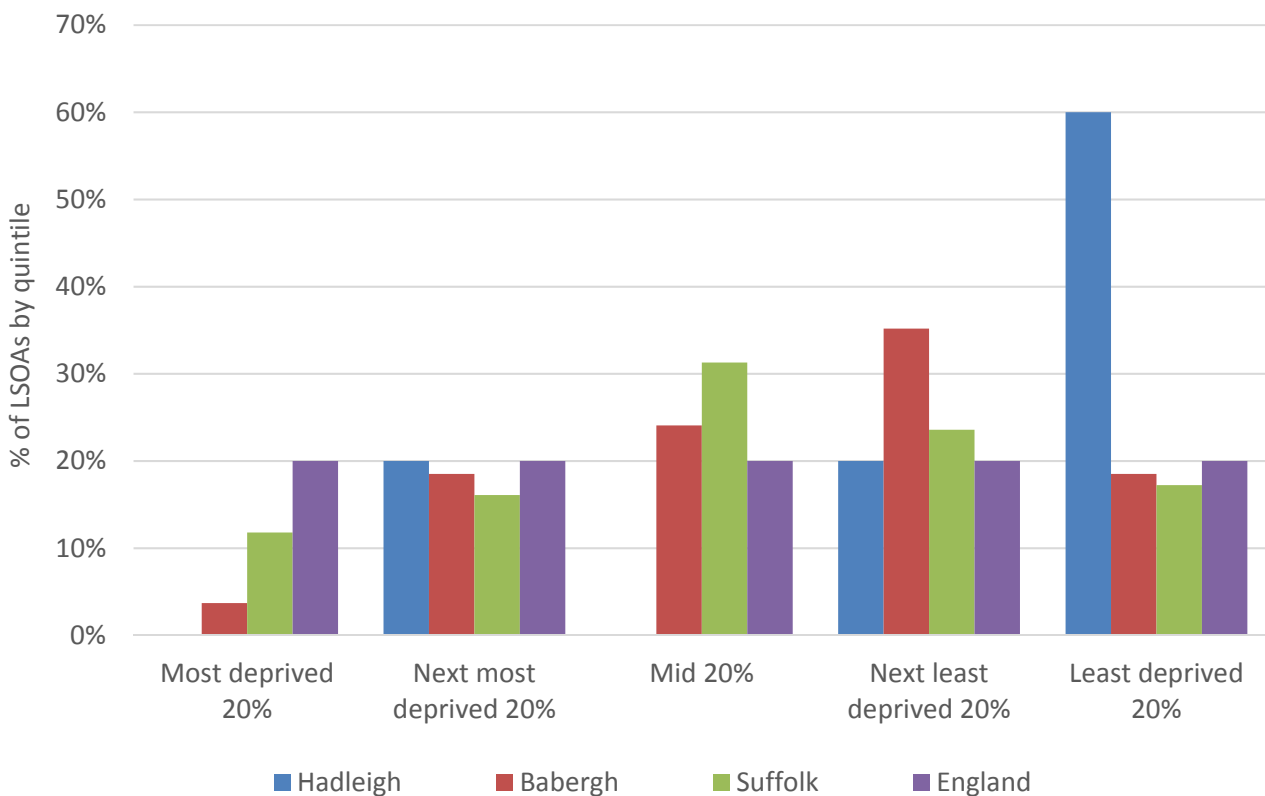


- In January 2017 2.8% of the 16-18 year olds in Hadleigh were classified as NEET (where current activity is known)
- NEET levels in Hadleigh tend to be below the Suffolk average and similar to the Babergh average

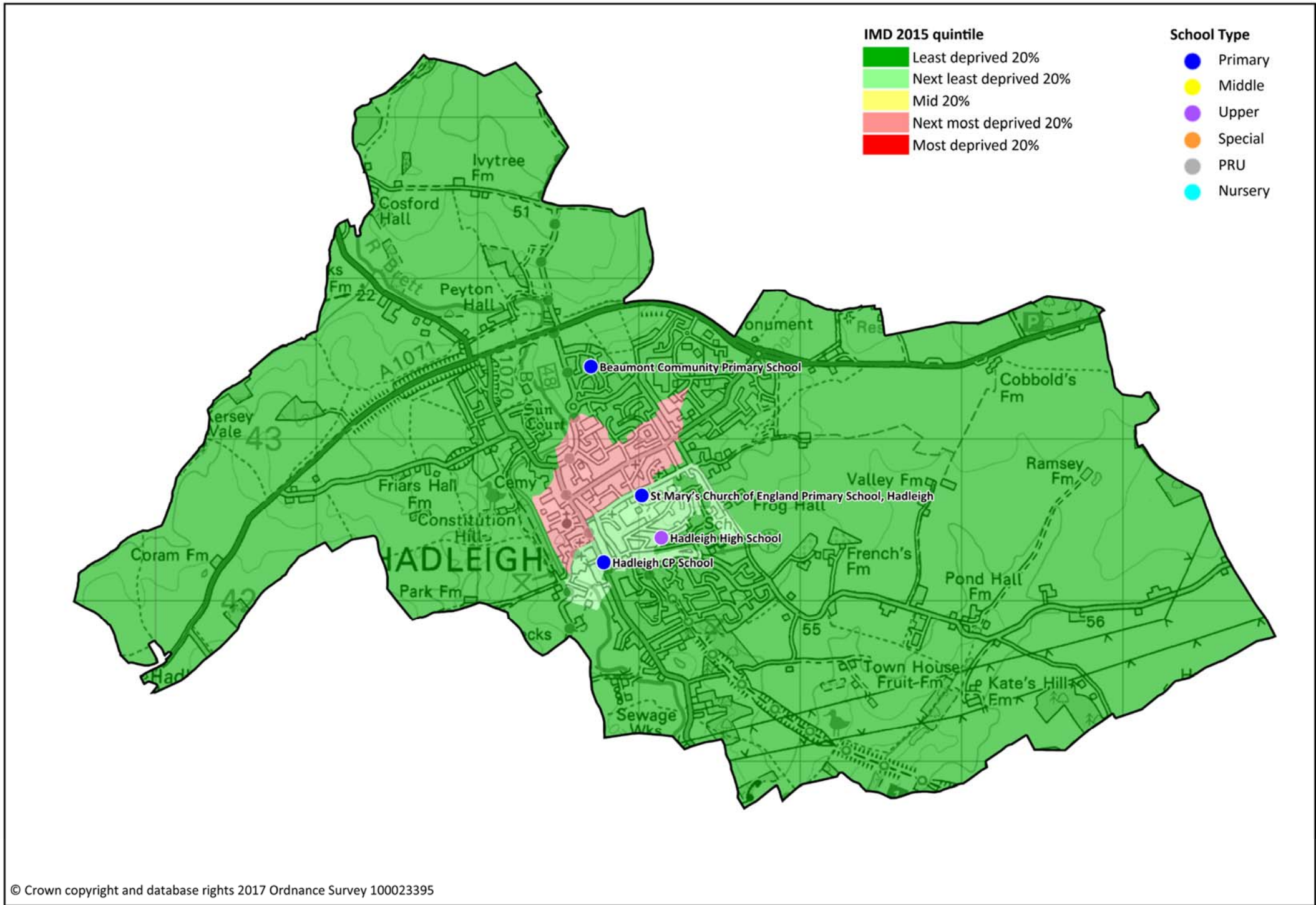
INDEX OF MULTIPLE DEPRIVATION (IMD) 2015 (SEE MAP OVERLEAF)

The IMD combines a number of indicators, chosen to cover a range of economic, social and housing issues, into a single deprivation score for each small area in England. This allows each area to be ranked relative to one another according to their level of deprivation. Small areas (Lower Super Output Areas, average population 1,500) are most usually described as being in 1 of 5 quintile bands. The bottom quintile represents the 20% of areas that are the most deprived in the country; these are shaded red on the map. The top quintile represents the least deprived areas in the country, and is shaded green.

The Index is widely used to analyse patterns of deprivation, identify areas that would benefit from special initiatives or programmes and as a tool to determine eligibility for specific funding streams.



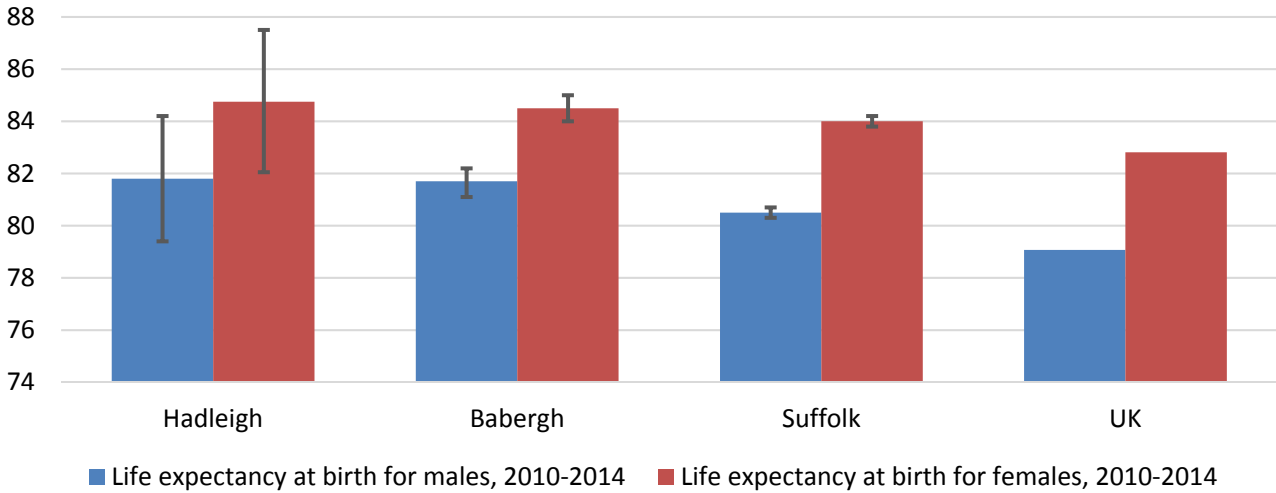
- The IMD 2015 shows that relative deprivation levels in Hadleigh are relatively low, with the majority of the division among the least deprived 20% nationally
- Of the five Lower Layer Super Output Areas (LSOA) comprising the division, three are ranked in the top 20% least deprived LSOAs in the country, one is in the next least deprived quintile (20%) and one is in the mid quintile



HEALTH

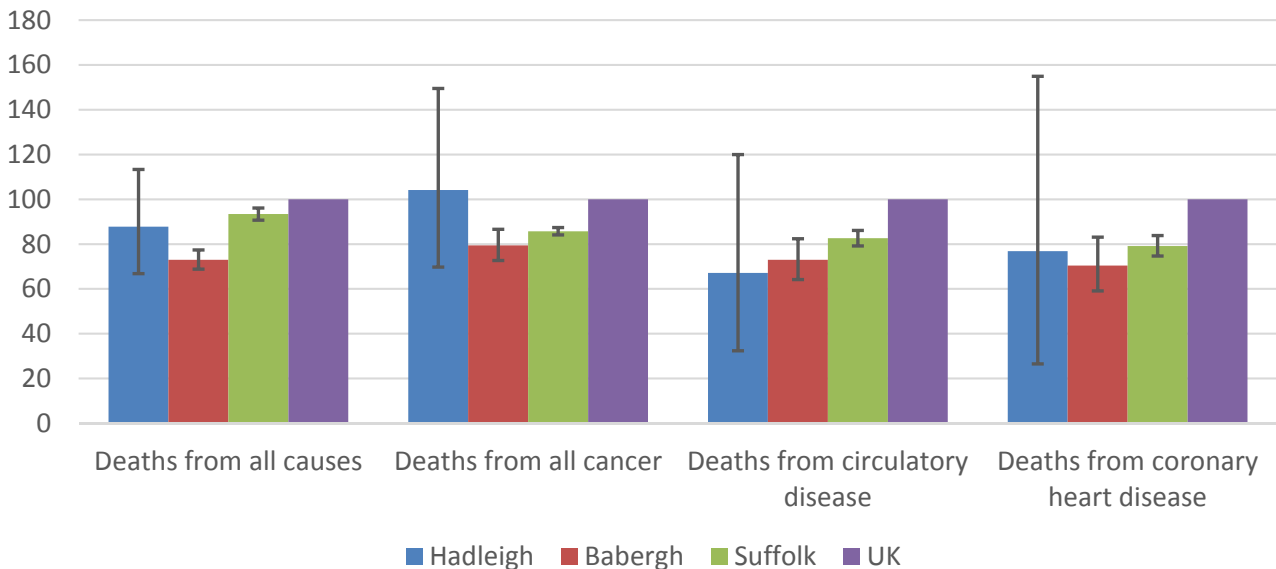
The local data used here is based on relatively small numbers. The confidence limits provide an indication of the reliability of the data. The 95% confidence intervals utilised on the chart provide a range within which there is 95% chance of the true result lying.

LIFE EXPECTANCY AT BIRTH



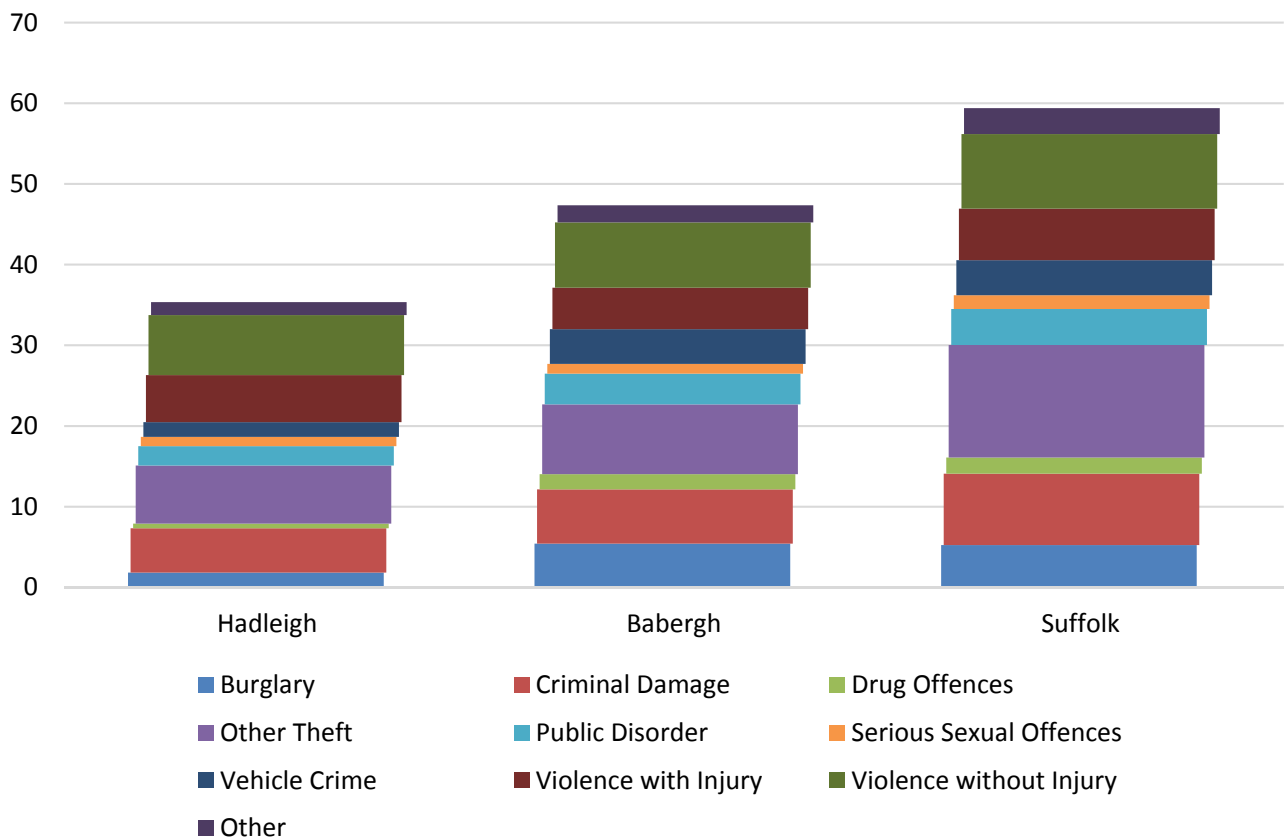
- Life expectancy estimates for Hadleigh are similar to the Babergh and Suffolk averages, but higher than the UK average for both men and women

DEATHS, UNDER 75 YEARS, STANDARDISED MORTALITY RATIO



- The estimated rate of early deaths from all causes in Hadleigh is below the Suffolk and UK level but above that seen across the rest of Babergh
- The standardised mortality ratio data shown here means that for every 100 early deaths from all causes across the UK as a whole, there are an estimated 88 comparable deaths in Hadleigh
- The rate of early deaths from cancer is relatively high in Hadleigh

CRIME & COMMUNITY SAFETY



- Hadleigh shows a lower overall rate of crime compared to the district and county averages but the general breakdown of types of crime recorded is very similar to the pattern seen for Babergh and Suffolk
- In 2015, there were just over 35 recorded crimes per 1,000 residents in Hadleigh compared to 47 in Babergh and 59 across the county as a whole
- Violence without injury and “other theft” comprise higher proportions of crimes in Hadleigh while drug offences, burglary and public disorder contribute proportionately lower number of crimes

ADDITIONAL INFORMATION

Parishes in Division

Hadleigh

DATA SOURCES

Category	Indicator	Source
Demographic Profile	Quinary population table 2015	ONS 2015 mid-year population estimates
	Population pyramid 2015	ONS 2015 mid-year population estimates
	Ethnicity 2011	ONS 2011 Census
Economy	Employment by broad industrial sector 2015	ONS Business Register and Employment Survey via NOMIS
Labour market	Job Seekers Allowance Claimant Rate (% 16-64 population) 2014-2017	DWP via NOMIS
Education	School information and attainment 2014-2016	Suffolk County Council
	% 16-18 year olds NEET (Not in Employment, Education or Training) 2013-2017	Suffolk County Council
Deprivation	Index of Multiple Deprivation 2015	Department for Communities and Local Government
Health	Life expectancy at birth 2010-2014	Public Health England
Health	Standardised mortality ratio for deaths from all causes, cancer, circulatory disease and coronary heart disease, aged under 75 2010-2014. The standardised mortality ratio is the ratio of observed deaths in the study group to expected deaths in the general population.	Public Health England
Community Safety	Recorded crime rate per 1,000 resident population 2015	Suffolk Police

For more data and information about Hadleigh Electoral Division, see the Suffolk Observatory www.suffolkobservatory.info

