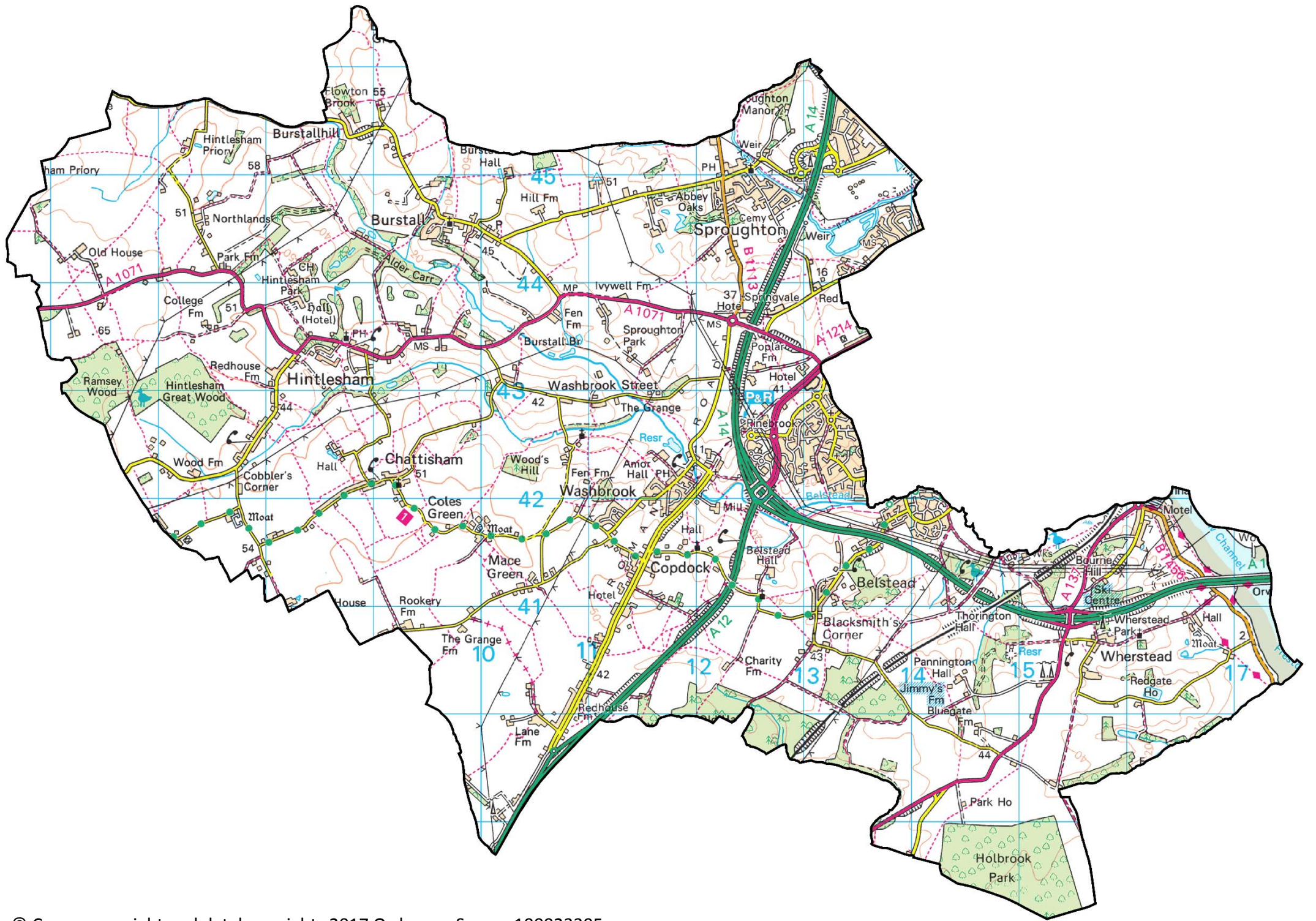


BELSTEAD BROOK

ELECTORAL DIVISION PROFILE 2017

This Division comprises Brook and Pinewood wards

www.suffolkobservatory.info



CONTENTS

- Demographic Profile: Age & Ethnicity
- Economy and Labour Market
- Schools & NEET
- Index of Multiple Deprivation
- Health
- Crime & Community Safety
- Additional Information
- Data Sources

ELECTORAL DIVISION PROFILES: AN INTRODUCTION

These profiles have been produced to support elected members, constituents and other interested parties in understanding the demographic, economic, social and educational profile of their neighbourhoods. We have used the latest data available at the time of publication.

Much more data is available from national and local sources than is captured here, but it is hoped that the profile will be a useful starting point for discussion, where local knowledge and experience can be used to flesh out and illuminate the information presented here.

The profile can be used to help look at some fundamental questions e.g.

- Does the age profile of the population match or differ from the national profile?
- Is there evidence of the ageing profile of the county in all the wards in the Division or just some?
- How diverse is the community in terms of ethnicity?
- What is the impact of deprivation on families and residents?
- Does there seem to be a link between deprivation and school performance?
- What is the breakdown of employment sectors in the area?
- Is it a relatively healthy area compared to the rest of the district or county?
- What sort of crime is prevalent in the community?

A vast amount of additional data is available on the **Suffolk Observatory**

www.suffolkobservatory.info

The Suffolk Observatory is a free online resource that contains all Suffolk's vital statistics; it is the one-stop-shop for information and intelligence about Suffolk. Through data, reports and profiles, the Suffolk Observatory provides a comprehensive picture of the County. It is a great source for useful facts and figures that can be used for writing reports and presentations, informing strategic and business planning, preparing funding applications or supporting academic research. Data is presented around the key themes of education and skills, economy and employment, health and care, population, deprivation, housing, environment, transport and travel and crime. All areas of the county are covered, right down to district, ward and parish level, with information easily accessible in a variety of formats. You can also build your own reports by different themes and topics.

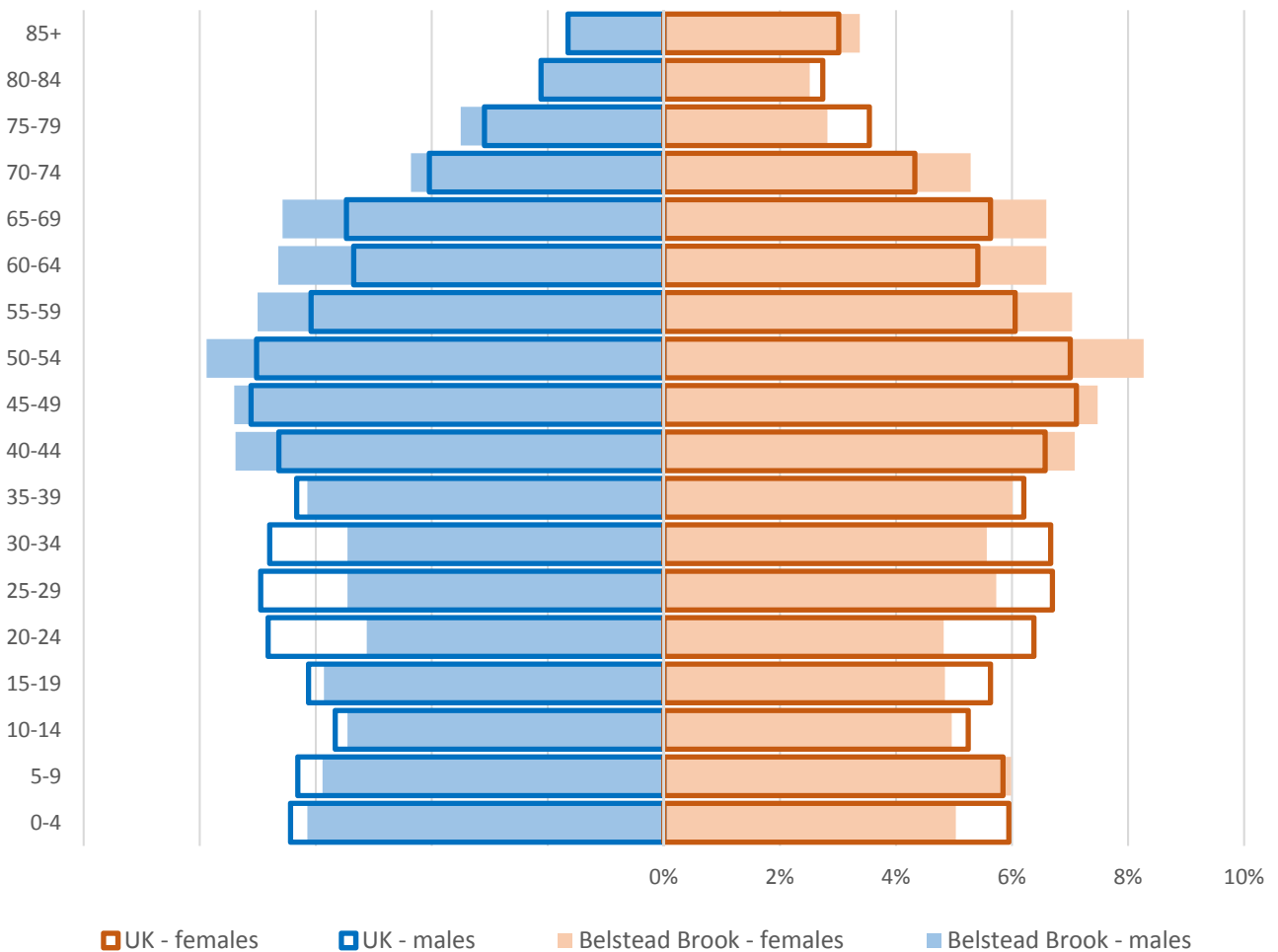
Technical Notes:

1. Where Electoral Divisions do not exactly match ward boundaries, we have adopted a "best fit" approach to produce a dataset.
2. District, county and national level data is provided where possible to provide a context for comparisons.

DEMOGRAPHIC PROFILE - AGE

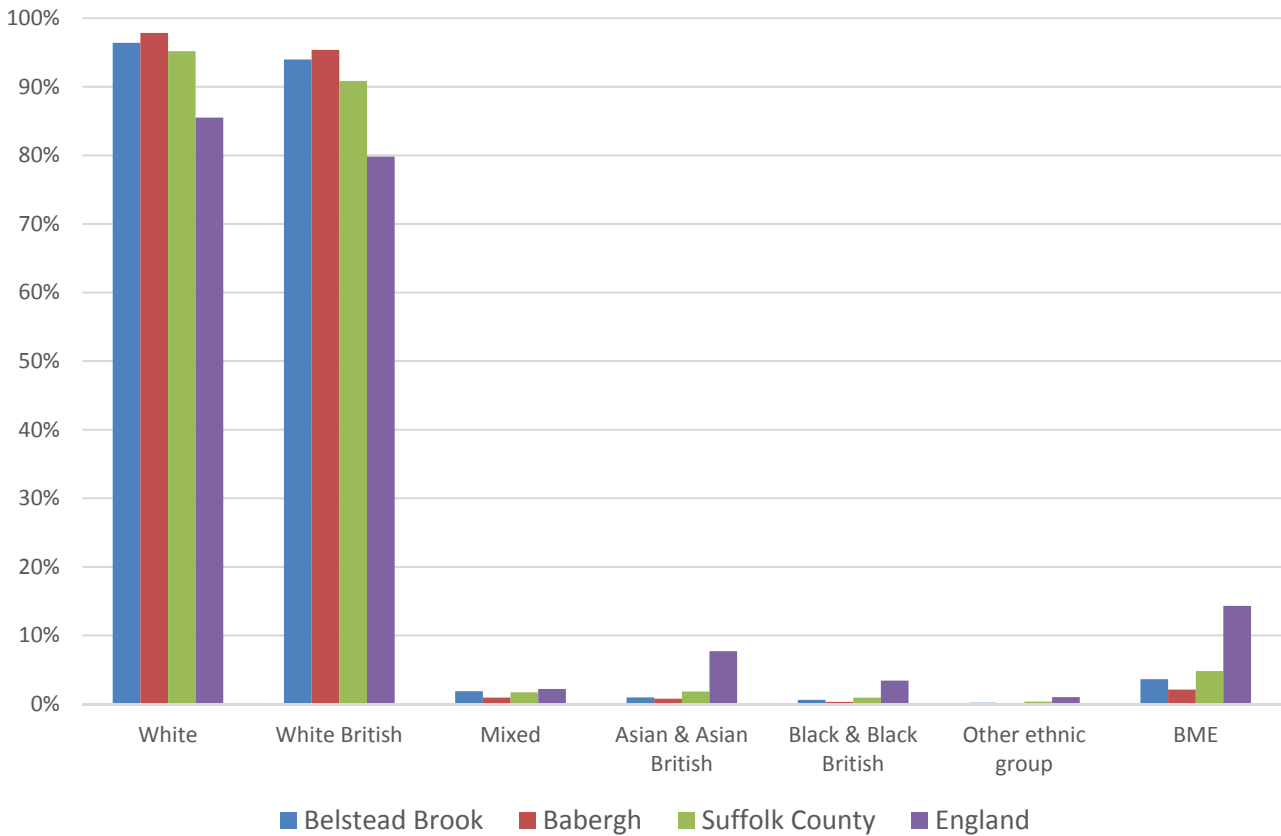
In mid-2015 the population of Belstead Brook stood at 8,493, an increase of 1.7% since the 2011 Census. The age structure of the component wards and the Division as a whole is set out below.

	Belstead Brook Division	Brook	Pinewood
All Ages	8,493	4,080	4,413
0-4	474	169	305
5-9	504	200	304
10-14	442	204	238
15-19	454	221	233
20-24	422	131	291
25-29	475	132	343
30-34	468	150	318
35-39	516	169	347
40-44	614	266	348
45-49	632	295	337
50-54	686	350	336
55-59	596	318	278
60-64	562	340	222
65-69	559	360	199
70-74	410	286	124
75-79	268	183	85
80-84	196	142	54
85+	215	164	51



- The age pyramid for Belstead Brook shows a higher than average proportion of people between the ages of 40 and 74
- The commonest age group in Belstead Brook is 50-54 year olds, followed by 45-49 year olds
- The proportion of young adults aged 20-29 is considerably below the national average
- At 75 years of age and above, there is a gender spilt, with more men than women 75-84 but reversal for 85+, which for females is higher than the UK average.

ETHNICITY

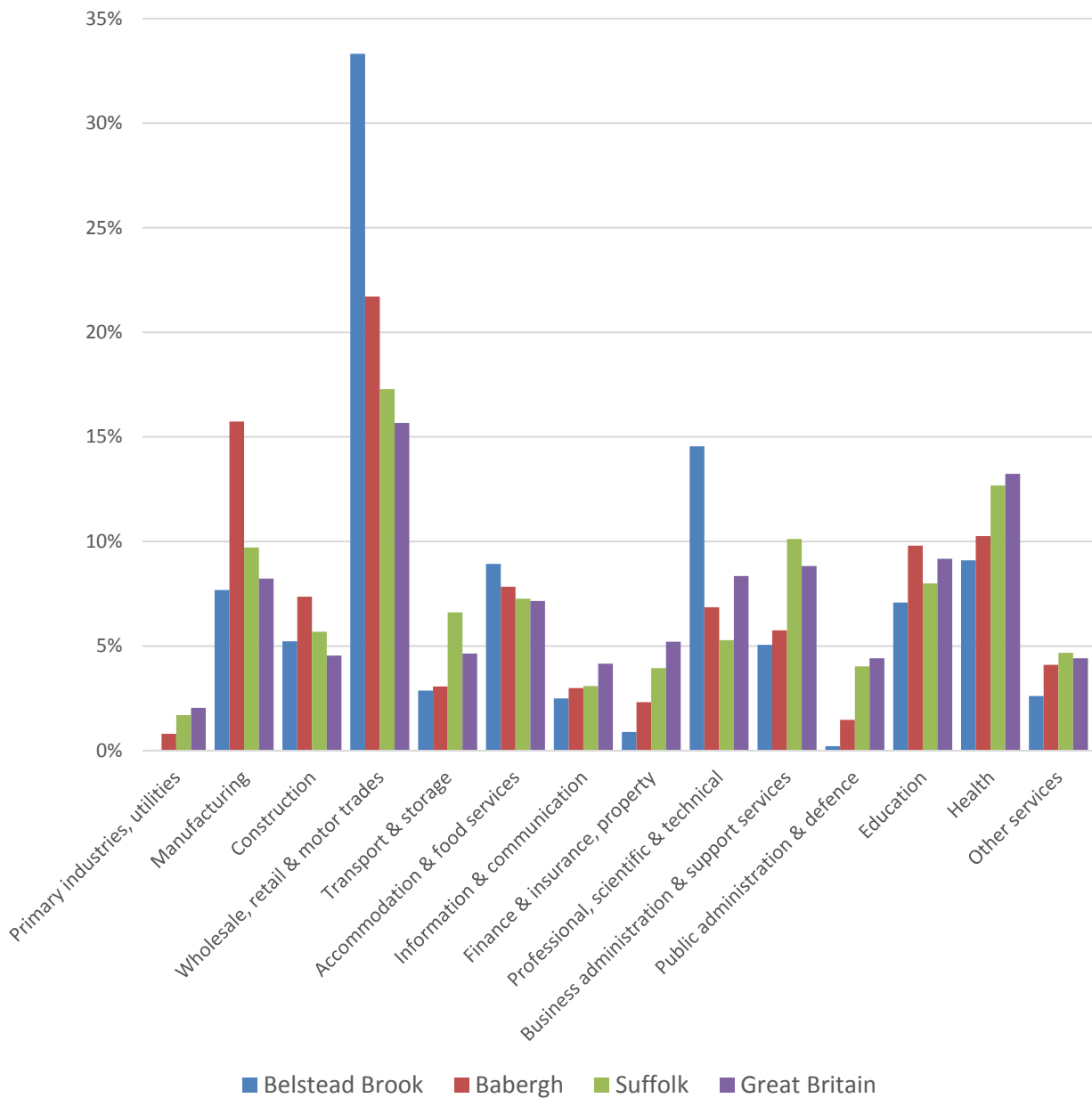


- According to the latest data (2011 Census), 96.4% of the population of Belstead Brook are white, which is slightly below average for a Division in Suffolk.
- Belstead Brook has a significantly higher proportion of minority ethnic groups compared to Babergh district, but generally lower proportions of minority ethnic groups than Suffolk as a whole

	All people		White		White British		Mixed		Asian and Asian British		Black and Black British		Other Ethnic Group		Black or Minority Ethnic Total	
	Count	Count	%	Count	%	Count	%	Count	%	Count	%	Count	%	Count	%	
Belstead Brook	8,350	8,048	96.4	7,847	94.0	155	1.9	80	1.0	51	0.6	16	0.2	302	3.6	
Babergh	87,740	85,845	97.8	83,666	95.4	827	0.9	666	0.8	264	0.3	138	0.2	1,895	2.2	
Suffolk	728,163	693,195	95.2	661,458	90.8	12,472	1.7	13,131	1.8	6,854	0.9	2,511	0.3	34,968	4.8	
England & Wales			86		80.5		2.2		6.7		2.8		0.4		12.1	

ECONOMY

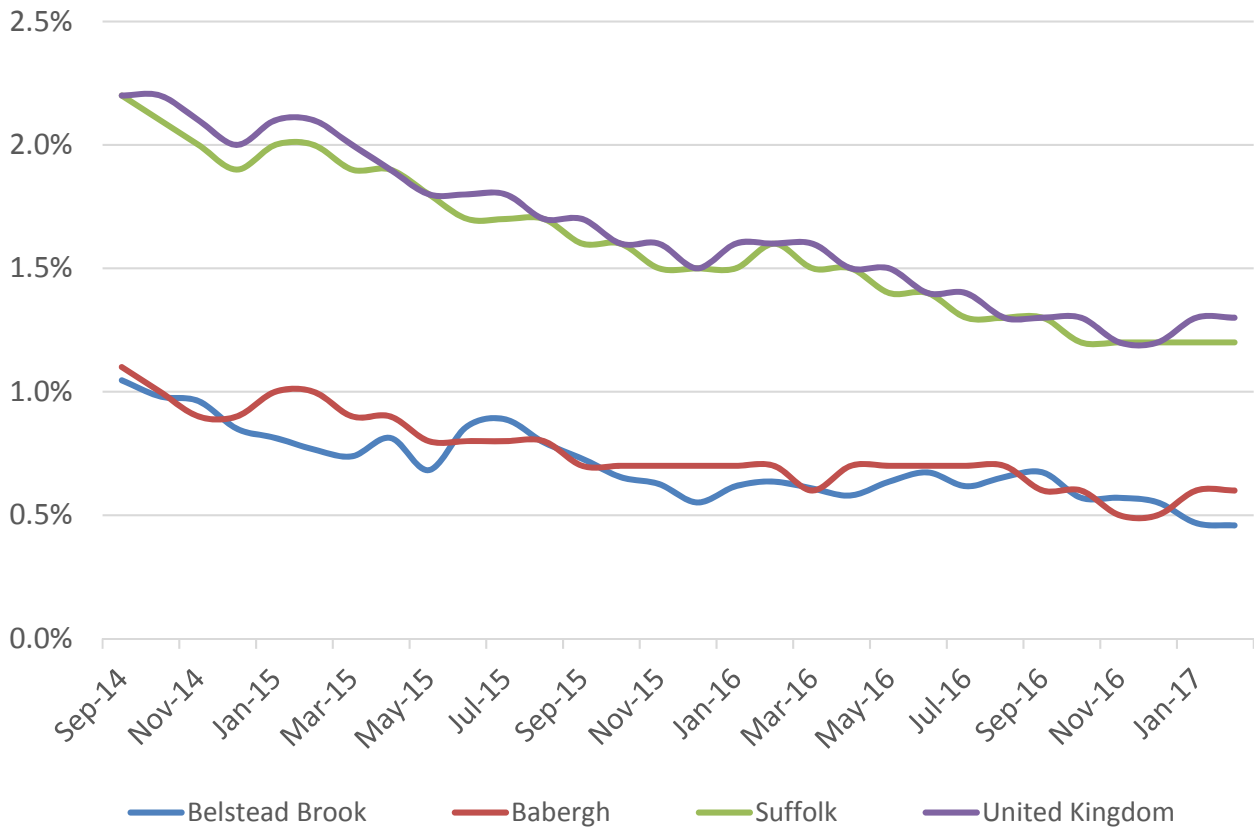
There are 5,400 people employed in Belstead Brook.



- The key employment sectors are wholesale, retail and motor trades, professional, scientific and technical activities, health, manufacturing and accommodation and food services
- Professional, scientific and technical, along with wholesale and retail, are particularly important as the proportion of these sectors in Belstead Brook is much higher than the national average. Almost half of employees in Belstead Brook are employed in these two sectors
- The employment sectors least represented within Belstead Brook are primary industries, utilities, transport and storage, finance and insurance, property and public administration & defence

LABOUR MARKET

JOB SEEKERS ALLOWANCE CLAIMANT RATE



- Around 0.5% of the working age population (aged 16-64) of Belstead Brook were claiming Job Seekers Allowance in February 2017. This is on a par with Babergh as a whole but well below county and national levels
- There has been a reduction in claimant unemployment in the division since 2014, in line with the county and national trends.
- Within Belstead Brook the extent of this reduction has been less pronounced than seen across Suffolk or nationally, but the starting point in the division was already significantly lower

SCHOOLS

SCHOOL INFORMATION

Schools in the Division

Name	Phase	Average cohort size at:				Latest Ofsted	Latest Ofsted Date
		Foundation Stage (age 5)	KS2 (age 11)	KS4 (age 16)	KS5 (age 18)		
Copdock Primary School	Primary	10	12			Outstanding	25/06/2010
Hintlesham & Chattisham CEVCP School	Primary	14	12			Outstanding	27/01/2009
Sproughton Church of England Primary School	Primary	16	12			Not yet inspected as an academy	
The Bridge School	Special	14	7	4		Good	22/01/2015
Suffolk One	Upper				434	Outstanding	12/05/2015

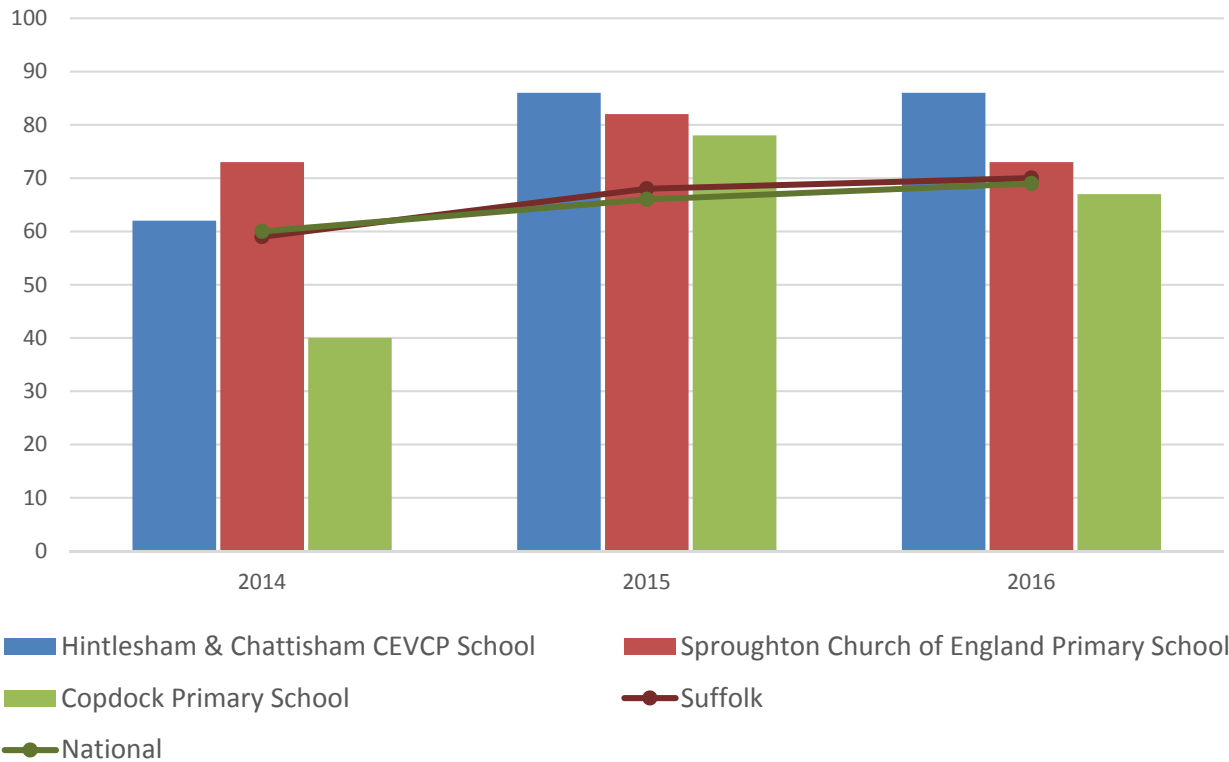
School Catchment overlaps with the Division

Name	Phase	Average cohort size at:				Latest Ofsted	Latest Ofsted Date
		Foundation Stage (age 5)	KS2 (age 11)	KS4 (age 16)	KS5 (age 18)		
Gusford Primary School	Primary	84	75			Requires Improvement	19/03/2015
Sprites Primary Academy	Primary	60	51			Not yet inspected	
Ranelagh Primary School	Primary	37	23			Good	08/11/2016
Tattingstone CEVCP School	Primary	14	8			Outstanding	25/06/2009
Chantry Academy	Upper		10	132	434	Requires Improvement	14/06/2016
Claydon High School	Upper		9	134		Good	18/07/2014
East Bergholt High School	Upper			184		Good	12/09/2013
Hadleigh High School	Upper			156		Good	20/10/2015
Holbrook Academy	Upper			95		Good	21/10/2015

SCHOOL ATTAINMENT

Foundation Stage Profile (reception)

% pupils achieving Good Level of Development (GLD)

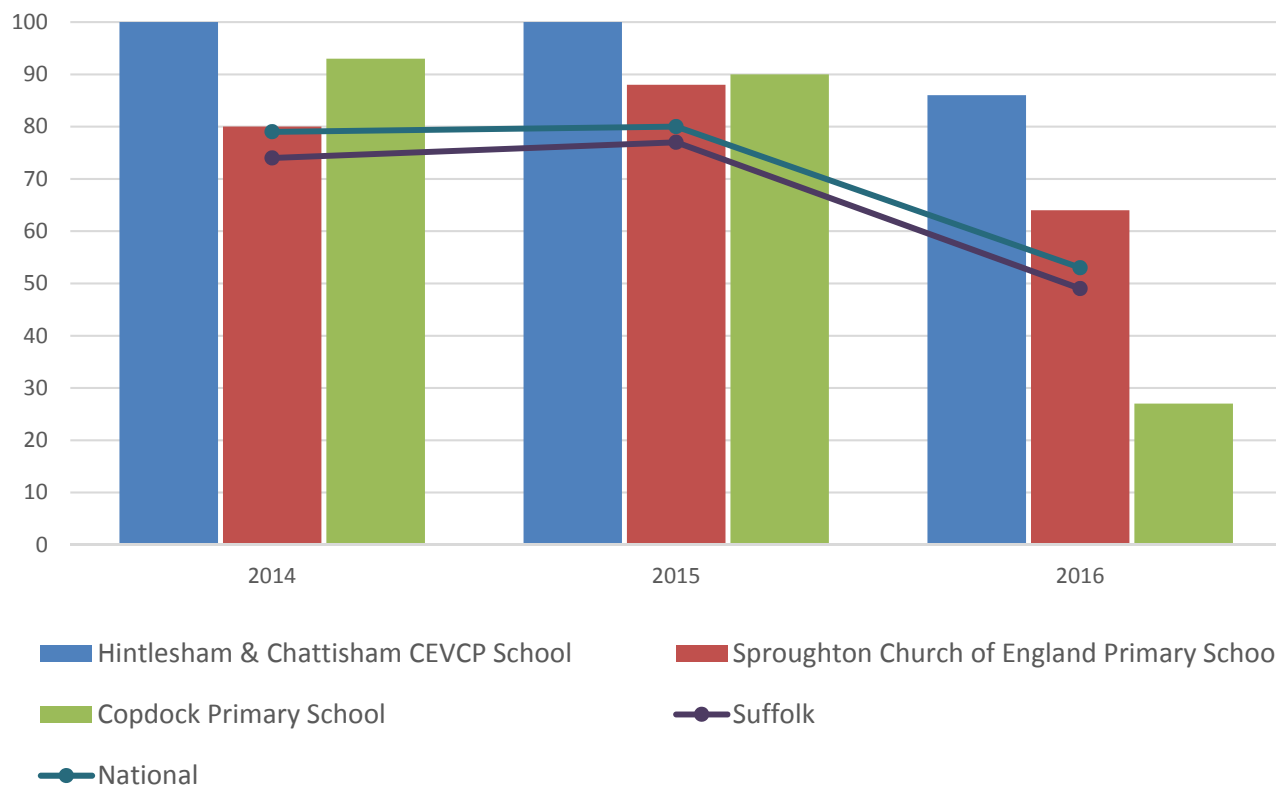


- Sproughton Church of England Primary School saw a decrease in Foundation Stage attainment in 2016 but still maintains its trend for above average results
- Attainment at Hintlesham and Chattisham CEVCP School has increased in 2015 and 2016 to levels above Suffolk and national averages
- Copdock Primary School has seen fluctuating results. Following well below average attainment at the school in 2014, results improved significantly in 2015 to well above the Suffolk and national averages before dipping below par in 2016

Key Stage 2 (age 11)

Pupil Achievement in all three subjects, Reading, Writing and Mathematics
(2014–2015 as % Level 4 or better & 2016 % Expected Level or better)

In July 2016, there was a change in the way pupil achievement is measured at the end of KS2. Prior to 2016, pupils received National Curriculum Level grades for English and Maths, with L4 being the expected level at the end of Key Stage 2. In 2016 the measure became a scaled score and shows whether or not a pupil has achieved the national standard for that subject.



- Attainment at Hintlesham and Chattisham CEVCP School and Sproughton Church of England Primary School has been consistently above the county and national average from 2014 to 2016
- 100% of pupils at Hintlesham and Chattisham CEVCP School achieved level 4 or above in both 2014 and 2015. Attainment at the school decreased in 2016, following the national trend, but remained well above national and county averages
- KS2 attainment of pupils at Copdock Primary School was also well above the Suffolk and national averages in 2014 and 2015, but saw disappointing results in 2016 with 27% of pupils achieving the expected level or better in reading, writing and mathematics (53% nationally)

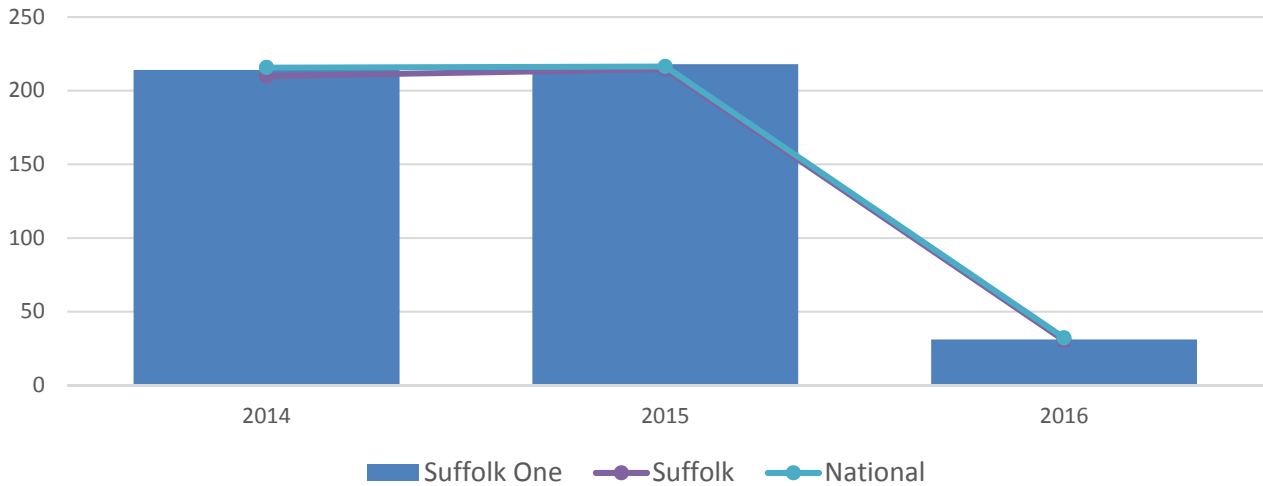
GCSE (Key Stage 4) (age 16)

There are no mainstream secondary schools in this division

A Level (Key Stage 5) (age 18)

Average point score per student

In 2016 there was a change in the way pupil achievement is measured at the end of KS5 and so the trend over time should not therefore be considered. The relative level of attainment at schools in the Electoral Division versus the Suffolk and National averages can still be seen.



- Suffolk One A level results are consistently on a par with the Suffolk and national benchmarks

NEET % (NOT IN EDUCATION, EMPLOYMENT OR TRAINING)

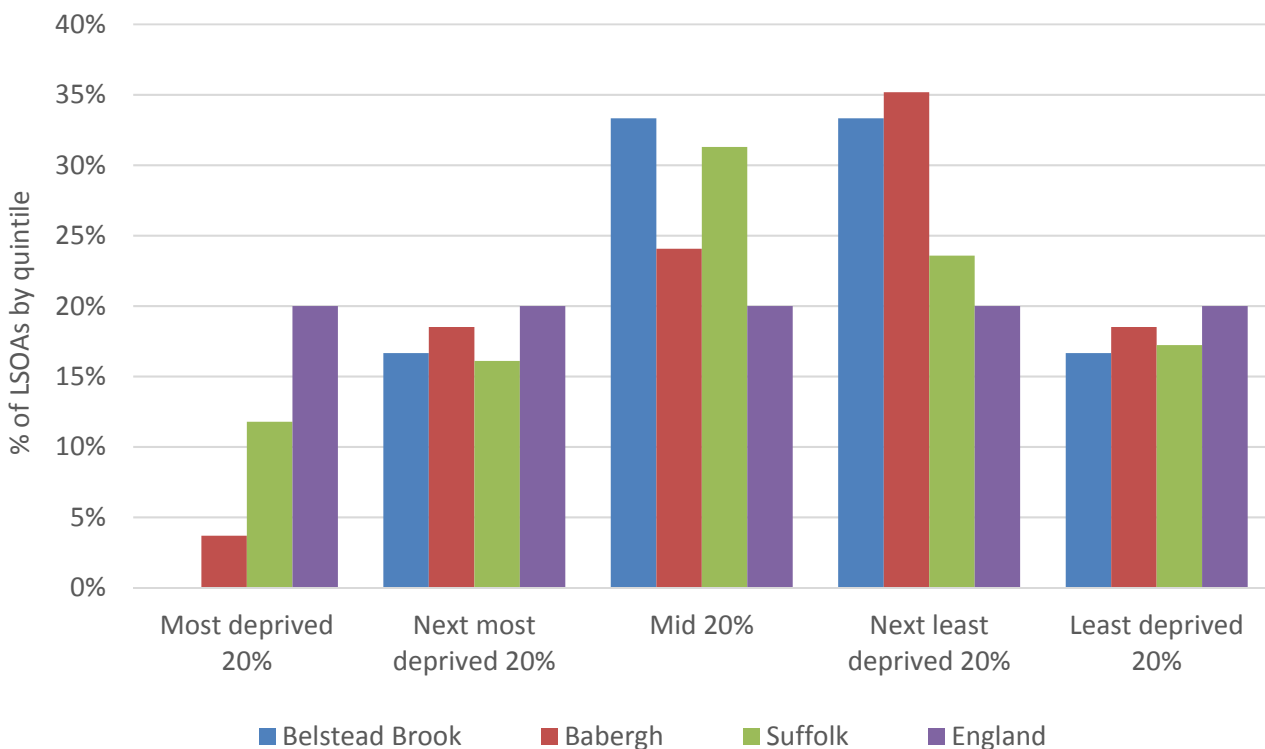


- In January 2017 0.9% of 16-18 year olds in Belstead Brook were classified as NEET (where current activity is known)
- Since November 2015, there has been a sharp decline in the number classified as NEET in Belstead Brook. This bucks the trend for Suffolk and Babergh, which both saw a noticeable rise in NEET figures towards the end of 2016
- NEET levels in Belstead Brook are generally below the district, county and national averages

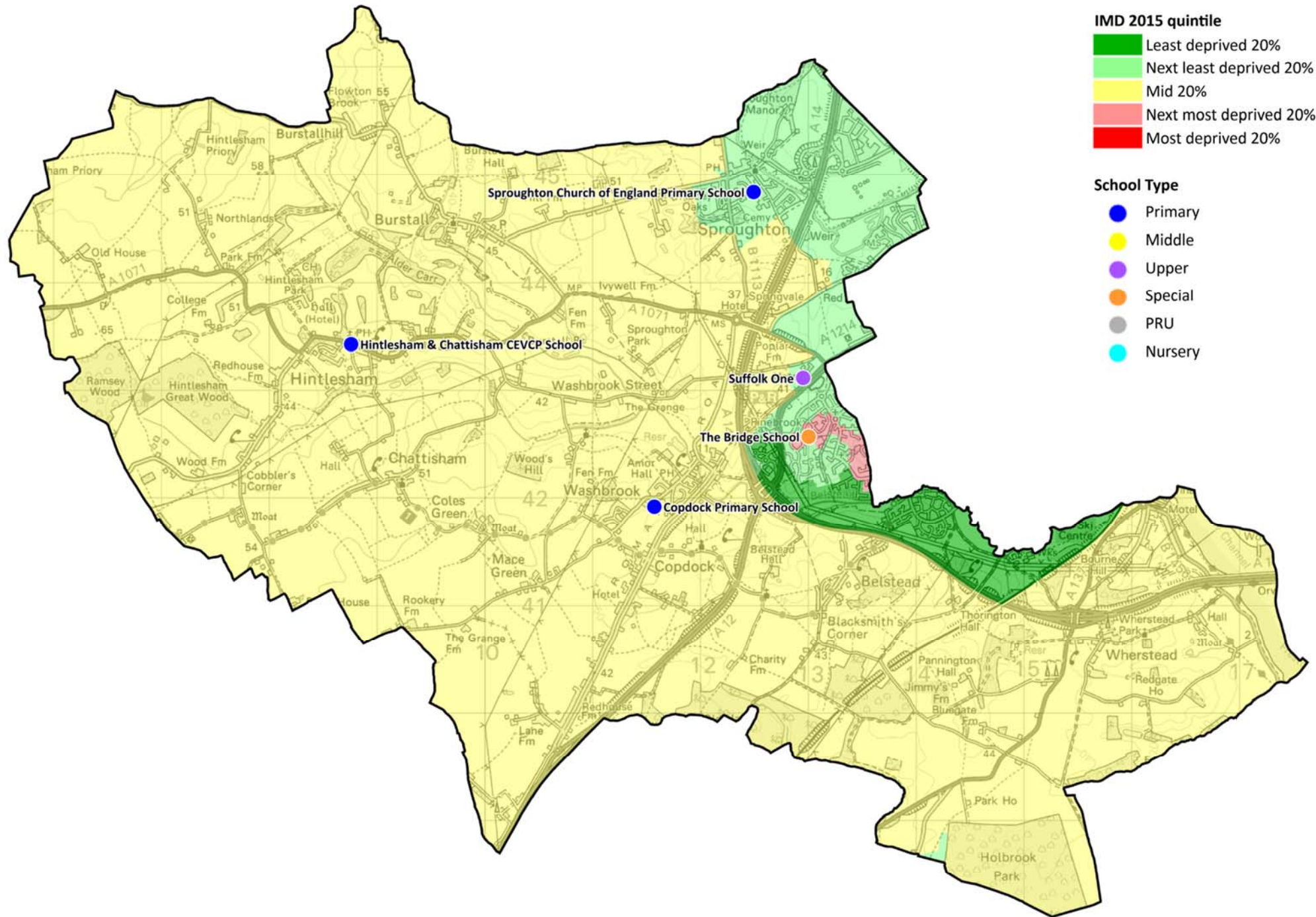
INDEX OF MULTIPLE DEPRIVATION (IMD) 2015 (SEE MAP OVERLEAF)

The IMD combines a number of indicators, chosen to cover a range of economic, social and housing issues, into a single deprivation score for each small area in England. This allows each area to be ranked relative to one another according to their level of deprivation. Small areas (Lower Super Output Areas, average population 1,500) are most usually described as being in 1 of 5 quintile bands. The bottom quintile represents the 20% of areas that are the most deprived in the country; these are shaded red on the map. The top quintile represents the least deprived areas in the country, and is shaded green.

The Index is widely used to analyse patterns of deprivation, identify areas that would benefit from special initiatives or programmes and as a tool to determine eligibility for specific funding streams.



- The IMD 2015 shows that there is significant variation in relative deprivation levels in Belstead Brook, but no part of the division is classified as being in the most deprived 20% of areas in England. Most parts of the division are among the mid 20% or the next least deprived quintile nationally
- Of the six Lower Layer Super Output Areas (LSOA) comprising the division, one is ranked in the top 20% least deprived LSOAs in the country, two are in the next best quintile (20%), two are in the mid quintile, and one is in the next most deprived quintile



IMD 2015 quintile

- Least deprived 20%
- Next least deprived 20%
- Mid 20%
- Next most deprived 20%
- Most deprived 20%

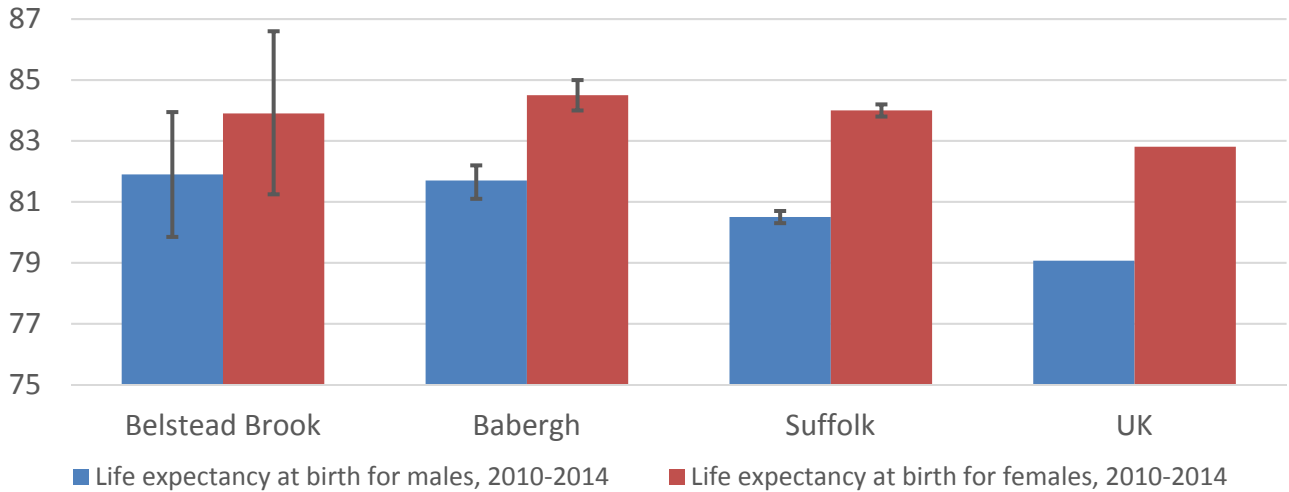
School Type

- Primary
- Middle
- Upper
- Special
- PRU
- Nursery

HEALTH

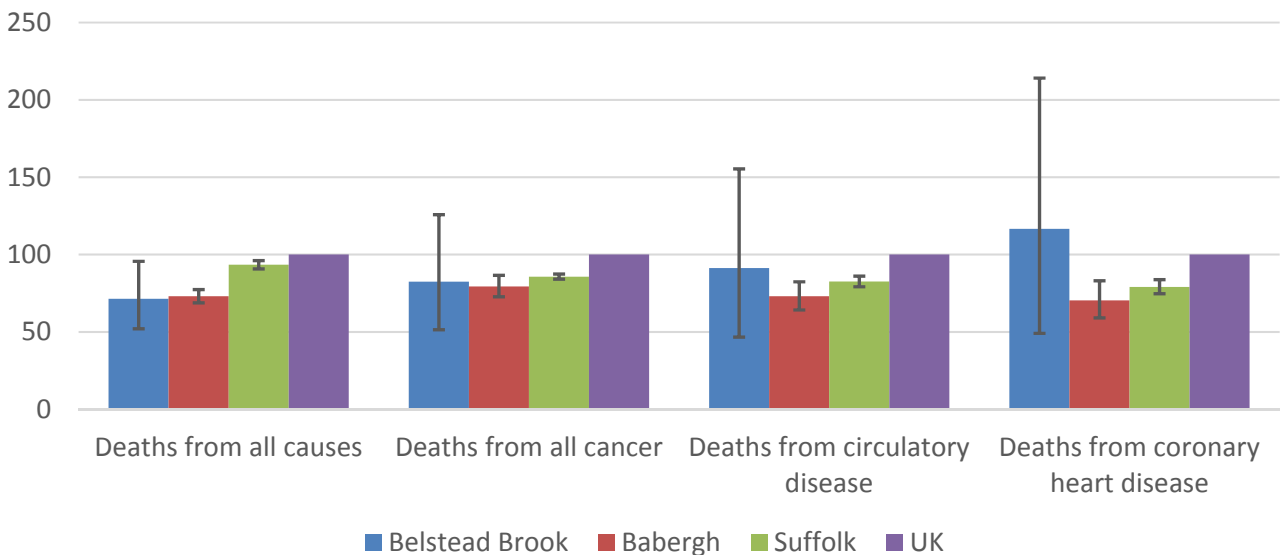
The local data used here is based on relatively small numbers. The confidence limits provide an indication of the reliability of the data. The 95% confidence intervals utilised on the chart provide a range within which there is 95% chance of the true result lying.

LIFE EXPECTANCY AT BIRTH



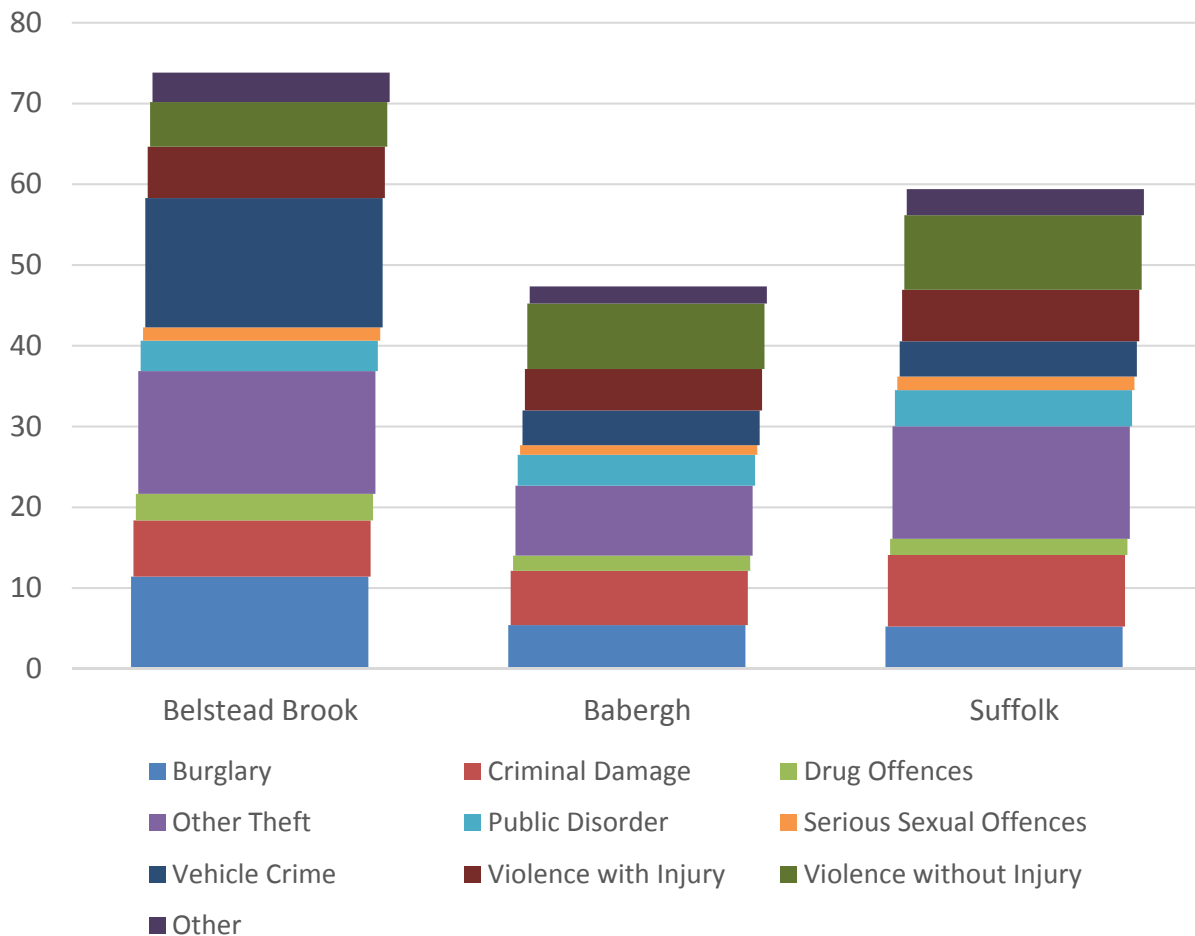
- Life expectancy estimates for Belstead Brook are fairly similar to the Babergh and Suffolk averages for both women and men, but is significantly above the UK average for men
- The life expectancy figure for females in the division is around 2 years longer than men. Nationally the life expectancy gap between the genders is nearer four years

DEATHS, UNDER 75 YEARS, STANDARDISED MORTALITY RATIO



- The standardised mortality ratio data shown here means that for every 100 early deaths from all causes across the UK as a whole, there are an estimated 71 comparable deaths in Belstead Brook
- Deaths from cancer and circulatory disease occur at a higher rate than across Babergh as a whole
- The ratio of early deaths due to coronary heart disease is above the district, county and national average in Belstead Brook, though the confidence intervals around the data are significant

CRIME & COMMUNITY SAFETY



- The crime rate in Belstead Brook in 2015 was 74 crimes per 1,000 residents, which is higher than the rate for Babergh (47 crimes per 1,000 people) and Suffolk (59 crimes per 1,000 people)
- Vehicle crime, burglary and drug offences comprise a significantly larger proportion of crimes in Belstead Brook than in Suffolk as a whole, while incidents of violence without injury comprise a lower proportion of crimes

ADDITIONAL INFORMATION

Parishes in Division

Belstead
 Burstall
 Chattisham
 Copdock and Washbrook
 Hintlesham
 Pinewood
 Sproughton
 Wherstead

DATA SOURCES

Category	Indicator	Source
Demographic Profile	Quinary population table 2015	ONS 2015 mid-year population estimates
	Population pyramid 2015	ONS 2015 mid-year population estimates
	Ethnicity 2011	ONS 2011 Census
Economy	Employment by broad industrial sector 2015	ONS Business Register and Employment Survey via NOMIS
Labour market	Job Seekers Allowance Claimant Rate (% 16-64 population) 2014-2017	DWP via NOMIS
Education	School information and attainment 2014-2016	Suffolk County Council
	% 16-18 year olds NEET (Not in Employment, Education or Training) 2013-2017	Suffolk County Council
Deprivation	Index of Multiple Deprivation 2015	Department for Communities and Local Government
Health	Life expectancy at birth 2010-2014	Public Health England
Health	Standardised mortality ratio for deaths from all causes, cancer, circulatory disease and coronary heart disease, aged under 75 2010-2014. The standardised mortality ratio is the ratio of observed deaths in the study group to expected deaths in the general population.	Public Health England
Community Safety	Recorded crime rate per 1,000 resident population 2015	Suffolk Police

For more data and information about Belstead Brook Electoral Division, see the Suffolk Observatory www.suffolkobservatory.info

